

Real-Time Workshop[®] 7

Getting Started Guide



MATLAB[®]
& **SIMULINK[®]**

How to Contact The MathWorks



www.mathworks.com
comp.soft-sys.matlab
www.mathworks.com/contact_TS.html

Web
Newsgroup
Technical Support



suggest@mathworks.com
bugs@mathworks.com
doc@mathworks.com
service@mathworks.com
info@mathworks.com

Product enhancement suggestions
Bug reports
Documentation error reports
Order status, license renewals, passcodes
Sales, pricing, and general information



508-647-7000 (Phone)



508-647-7001 (Fax)



The MathWorks, Inc.
3 Apple Hill Drive
Natick, MA 01760-2098

For contact information about worldwide offices, see the MathWorks Web site.

Real-Time Workshop® Getting Started Guide

© COPYRIGHT 2002–2008 by The MathWorks, Inc.

The software described in this document is furnished under a license agreement. The software may be used or copied only under the terms of the license agreement. No part of this manual may be photocopied or reproduced in any form without prior written consent from The MathWorks, Inc.

FEDERAL ACQUISITION: This provision applies to all acquisitions of the Program and Documentation by, for, or through the federal government of the United States. By accepting delivery of the Program or Documentation, the government hereby agrees that this software or documentation qualifies as commercial computer software or commercial computer software documentation as such terms are used or defined in FAR 12.212, DFARS Part 227.72, and DFARS 252.227-7014. Accordingly, the terms and conditions of this Agreement and only those rights specified in this Agreement, shall pertain to and govern the use, modification, reproduction, release, performance, display, and disclosure of the Program and Documentation by the federal government (or other entity acquiring for or through the federal government) and shall supersede any conflicting contractual terms or conditions. If this License fails to meet the government's needs or is inconsistent in any respect with federal procurement law, the government agrees to return the Program and Documentation, unused, to The MathWorks, Inc.

Trademarks

MATLAB and Simulink are registered trademarks of The MathWorks, Inc. See www.mathworks.com/trademarks for a list of additional trademarks. Other product or brand names may be trademarks or registered trademarks of their respective holders.

Patents

The MathWorks products are protected by one or more U.S. patents. Please see www.mathworks.com/patents for more information.

Revision History

July 2002	First printing	New for Version 5.0 (Release 13)
June 2004	Second printing	Revised for Version 6.0 (Release 14)
October 2004	Third printing	Revised for Version 6.1 (Release 14SP1)
March 2005	Online only	Revised for Version 6.2 (Release 14SP2)
September 2005	Fourth printing	Revised for Version 6.3 (Release 14SP3)
March 2006	Online Only	Revised for Version 6.4 (Release 2006a)
September 2006	Online Only	Revised for Version 6.5 (Release 2006b)
March 2007	Fifth printing	Revised for Version 6.6 (Release 2007a)
September 2007	Online Only	Revised for Version 7.0 (Release 2007b)
March 2008	Sixth printing	Revised for Version 7.1 (Release 2008a)

Introduction

1

Product Overview	1-2
Introduction	1-2
Components and Features	1-3
Accelerating Your Development Process	1-7
Installing the Real-Time Workshop® Software	1-11
Installation Requirements	1-11
Supported Third-Party Compilers	1-12
Compiler Optimization Settings	1-12
Troubleshooting Third-Party Windows® Compiler Configurations	1-13
Real-Time Workshop® Demos	1-15
MathWorks Products Supported by the Real-Time Workshop® Software	1-16
Help and Documentation	1-19
Prerequisites	1-19
Online Documentation	1-19
For Further Information	1-20

Building an Application

2

Real-Time Workshop® Workflow	2-2
Workflow Overview	2-2
Mapping Application Requirements to Configuration Options	2-4
Adjusting Configuration Settings	2-5
Running Model Advisor	2-6

Generating Code	2-8
Building an Executable Program	2-8
Verifying the Executable Program	2-9
Naming and Saving the Configuration Set	2-10
Documenting the Project	2-11
Automatic Program Building	2-13
Build Process	2-15
Build Process Steps	2-15
Model Compilation	2-17
Code Generation	2-17
Customized Makefile Generation	2-18
Executable Program Generation	2-19
Files and Directories Created by the Build Process	2-20

Working with the Real-Time Workshop® Software

3

Demonstration Model: rtwdemo_f14	3-3
Building a Generic Real-Time Program	3-4
Tutorial Overview	3-4
Working and Build Directories	3-4
Setting Program Parameters	3-5
Selecting the Target Configuration	3-8
Building and Running the Program	3-12
Contents of the Build Directory	3-14
Data Logging	3-16
Tutorial Overview	3-16
Data Logging During Simulation	3-17
Data Logging from Generated Code	3-19
Code Verification	3-24
Tutorial Overview	3-24
Logging Signals via Scope Blocks	3-24
Logging Simulation Data	3-26

Logging Data from the Generated Program	3-26
Comparing Numerical Results of the Simulation and the Generated Program	3-28
First Look at Generated Code	3-30
Tutorial Overview	3-30
Setting Up the Model	3-30
Generating Code Without Buffer Optimization	3-32
Generating Code with Buffer Optimization	3-34
Further Optimization: Expression Folding	3-36
HTML Code Generation Reports	3-38
Working with External Mode Using GRT	3-41
Tutorial Overview	3-41
Setting Up the Model	3-42
Building the Target Executable	3-44
Running the External Mode Target Program	3-47
Tuning Parameters	3-53
Generating Code for a Referenced Model	3-55
Tutorial Overview	3-55
Creating and Configuring a Subsystem Within the vdp Model	3-55
Converting the Model to Use Model Referencing	3-58
Generating Model Reference Code for a GRT Target	3-62
Working with Project Directories	3-65
Documenting a Code Generation Project	3-67
Tutorial Overview	3-67
Generating Code for the Model	3-68
Opening Report Generator	3-69
Setting Report Output Options	3-70
Specifying Models and Subsystems to Include in a Report	3-72
Setting Component Options	3-72
Generating the Report	3-73
Reviewing the Generated Report	3-73

Glossary

Index

Introduction

This guide begins with a high-level overview of Real-Time Workshop®, describing its purpose, its components, its major features, and the ways in which it leverages the Simulink® modeling power for developing real-time applications on a variety of platforms. You will also find information about installing the Real-Time Workshop software, including discussions of related products from The MathWorks and compilers from third parties, as well as pointers to demos and online and printable documentation. The chapter is laid out as follows:

Product Overview (p. 1-2)	What it is, and what it can do for you
Installing the Real-Time Workshop® Software (p. 1-11)	Information on supported compilers
Real-Time Workshop® Demos (p. 1-15)	Demonstrations that illustrate code generation capabilities
MathWorks Products Supported by the Real-Time Workshop® Software (p. 1-16)	Products for which code can be generated or which otherwise work with the Real-Time Workshop software
Help and Documentation (p. 1-19)	Locating and using online and printed help documents

Product Overview

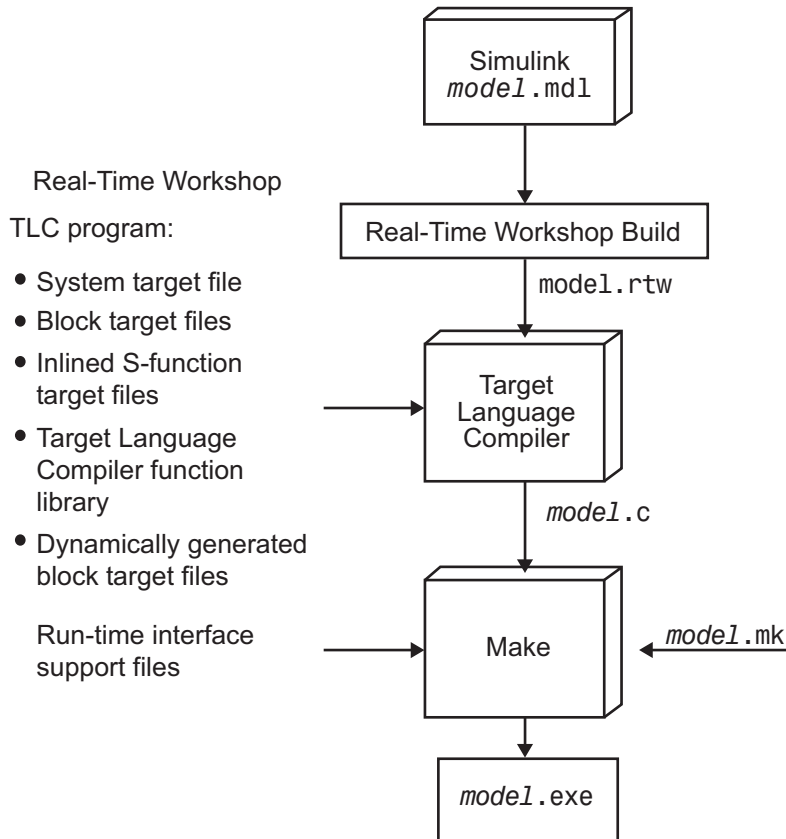
In this section...
“Introduction” on page 1-2
“Components and Features” on page 1-3
“Accelerating Your Development Process” on page 1-7

Introduction

The Real-Time Workshop® product is an extension of capabilities of the Simulink® and MATLAB® products that automatically generates, packages, and compiles source code from Simulink models to create real-time software applications on a variety of systems. By providing a code generation environment for rapid prototyping and deployment, the Real-Time Workshop product is the foundation for production code generation capabilities. Along with other tools and components from The MathWorks, the Real-Time Workshop product provides

- Automatic code generation tailored for a variety of target platforms
- A rapid and direct path from system design to implementation
- Seamless integration with MATLAB and Simulink
- A simple graphical user interface
- An open architecture and extensible make process

The Real-Time Workshop process of generating source code from Simulink models is shown in the following diagram.



Components and Features

The principal Real-Time Workshop components and features are

- **Simulink Code Generator** — Automatically generates C code from your Simulink model.
- **Make process** — The Real-Time Workshop user-extensible make process lets you customize compilation and linking of generated code for your own production or rapid prototyping target.

- **Simulink external mode** — External mode enables communication between Simulink and a model executing on a real-time test environment, or in another process on the same machine. External mode lets you perform parameter tuning, data logging, and viewing using Simulink.
- **Targeting support** — Using the targets bundled with the Real-Time Workshop software, you can build systems for real-time and prototyping environments. The generic real-time and other bundled targets provide a framework for developing customized rapid prototyping or production target environments. In addition to the bundled targets, the optional Real-Time Windows Target™ and the xPC Target™ let you turn almost any PC into a rapid prototyping target or a small to medium volume production target. To supplement core capabilities, the optional Real-Time Workshop® Embedded Coder™ and embedded target (Embedded IDE Link™ CC, Embedded IDE Link MU, Embedded IDE Link TS, Embedded IDE Link VS) products extend and tailor Real-Time Workshop code to run in a growing suite of microprocessor environments.
- **Rapid simulations** — Using the Simulink® Accelerator™ software, the S-Function target, or the Rapid Simulation target, you can accelerate your simulations by 5 to 20 times on average. Executables built with these targets bypass normal Simulink interpretive simulation mode. Code generated by the Simulink Accelerator software, S-Function target, and Rapid Simulation target is highly optimized to execute only the algorithms used in your specific model. In addition, the code generator applies many optimizations, such as eliminating ones and zeros in computations for filter blocks.
- **Large-scale modeling** — Support for multilevel modeling (termed *model referencing*) in Simulink is mirrored in the Real-Time Workshop software, which lets you generate code incrementally for a hierarchy of independent component models, as they evolve.

Real-Time Workshop features include

- **Code generation for Simulink models**
 - Generates optimized, customizable code. There are several styles of generated code, which can be classified as either embedded (production phase) or rapid prototyping.

- Supports all Simulink features, including 8-, 16-, and 32-bit integers and floating-point double and single data types.
 - Provides fixed-point capabilities for scaling of integer words ranging from 1 (unsigned) or 2 (signed) to 32 bits. Code generation is limited by the implementation of char, short, int, and long in embedded C compiler environments (usually 8, 16, and 32 bits, respectively). You can choose hardware characteristics for more than 20 preconfigured target processors by name or create your own custom processor definition.
 - Generates processor-independent code. The generated code represents your model exactly. A separate run-time interface is used to execute this code. The Real-Time Workshop software provides several example run-time interfaces, as well as production run-time interfaces.
 - Supports single- or multitasking operating system environments, as well as bare-board (no operating system) environments.
 - Provides the flexible scripting capabilities of the Target Language Compiler to enable you to fully customize generated code.
 - Allows you to craft efficient code for S-functions (user-created blocks) using Target Language Compiler instructions (called TLC scripts) that automatically integrates with generated code.
- **Extensive model debugging support**
 - External mode enables you to examine what the generated code is doing by uploading data from your target to the graphical display elements in your model. There is no need to use a conventional source-level debugger to look at your generated code.
 - External mode also enables you to tune the generated code via your Simulink model. When you change a parameter value of a block in your model, the new value is passed down to the generated code running on your target, and the corresponding target memory location is updated.
- **Integration with Simulink**
 - Code verification. You can generate code for your model and create a stand-alone executable that exercises the generated code and produces a MAT-file containing the execution results.
 - Generated code contains system and block identification tags to help you identify the block in your source model that generated a given line of

code. The MATLAB command `hilite_system` recognizes these tags and highlights the corresponding blocks in your model.

- Support for Simulink data objects lets you define how your signals and block parameters interface to the external world.
- **Integration with Stateflow®**
 - Code generation. Seamless code generation support for models that contain Stateflow charts.
 - Full support for Stateflow® Coder™ features.
- **Rapid simulation**
 - The Real-Time Workshop software supports several ways to speed up your simulations by creating optimized, model-specific executables.
- **Target support**
 - Turnkey solutions for rapid prototyping substantially reduce design cycles, allowing for fast turnaround of design iterations.
 - Bundled rapid prototyping example targets provide working code you can modify and use quickly. For a complete list of bundled targets, with their associated system target files and template makefiles, see “Choosing and Configuring Your Target” in the Real-Time Workshop documentation.
 - The optional Real-Time Windows Target and xPC Target products for PC-based hardware from The MathWorks enable you to turn a PC with fast, high-quality, low-cost hardware into a rapid prototyping system.
 - The Real-Time Workshop Embedded Coder add-on product provides extensive support for tailoring generated code to special requirements of embedded hardware, software environments, data formats, and tool chain protocols.
 - The MathWorks offers a growing set of code generation products for embedded processors, such as Target Support Package™ IC1 and Target Support Package FM5, which via turnkey hardware support extend the benefits of the Real-Time Workshop and Real-Time Workshop Embedded Coder software into production environments.
 - Supports a variety of third-party hardware and tools, with extensible device driver support.
- **Extensible make process**

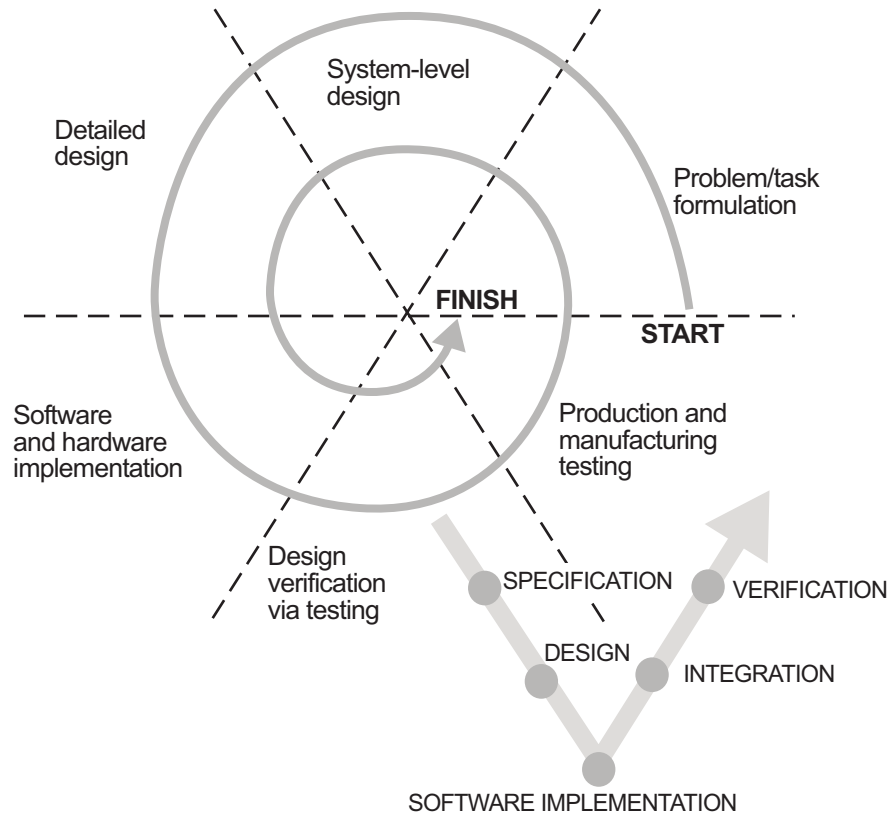
- Allows for easy integration with any embedded compiler and linker.
- Provides for easy linkage with your hand-written supervisory or supporting code.

The Real-Time Workshop Embedded Coder software, mentioned above,

- Generates ANSI® and ISO C code and executables for discrete, continuous, or hybrid models
- Uses model blocks to incrementally generate and build code for large applications
- Supports Simulink data dictionary features for integer, floating-point, and fixed-point data
- Generates code for single-rate, multirate, and asynchronous models
- Supports single-tasking and multitasking operating systems and bare-board (no operating system) environments
- Performs code optimizations that improve code execution speed
- Provides capabilities for code customization and legacy code integration
- Lets you interactively tune and monitor the generated code inside or outside of Simulink

Accelerating Your Development Process

The MathWorks gives you the ability to simplify and accelerate most phases of software development, and at the same time to eliminate repetitive and error-prone tasks, including some design document preparation. These tools lend themselves particularly well to the spiral design process shown below.



When you work with tools from The MathWorks, *your model represents your understanding of your system*. This understanding is preserved from one phase of modeling to the next, reducing the need to backtrack. In the event that rework is necessary in a previous phase, it is easier to step back because the same model and tools are used throughout.

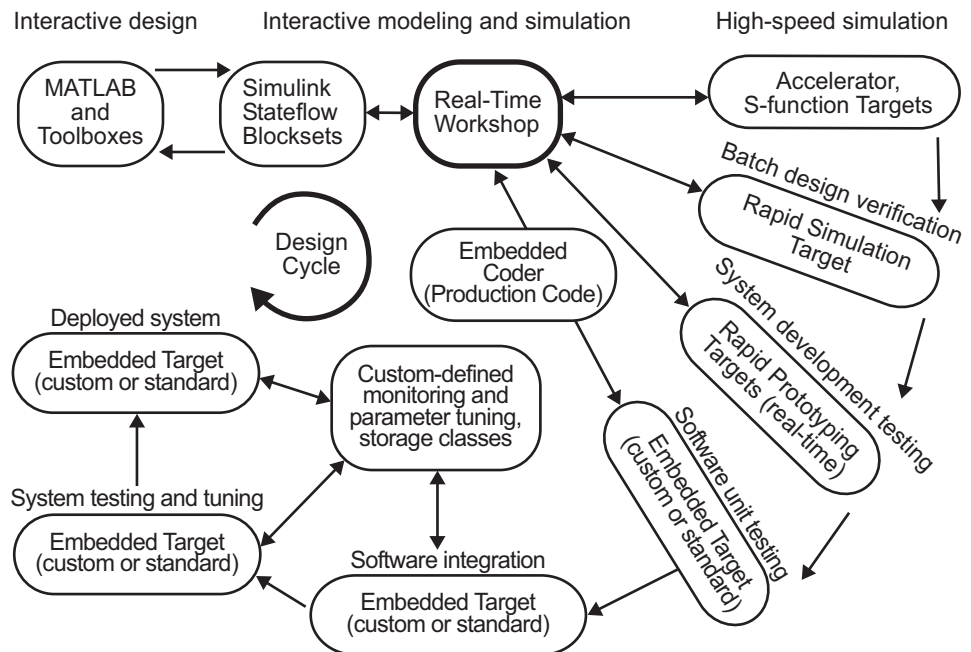
A spiral design process allows quick iterations between phases, enabling you to focus on design work. To do this cost-effectively, you need to use tools that make it easy to move from one phase to another. For example, in a matter of minutes a control system engineer or a signal processing engineer can verify that an algorithm works on a real-world rapid prototyping system. The spiral process lends itself naturally to parallelism in the overall development process. You can provide early working models to validation and production

groups, involving them in your system development process from the start. Once unit models are prototyped, tested, and ready, they can be packaged into larger assemblies using Model blocks (the Simulink *model referencing* facility). This helps to compress overall development time while increasing quality.

Simulink facilitates the first three phases described in the above figure. You can build applications using built-in blocks from the Simulink and Stateflow libraries, incorporate specialized blocks from the Aerospace Blockset™, Communications Blockset™, Signal Processing Blockset™, and other MathWorks™ blocksets, and develop your own blocks by writing S-functions.

The Real-Time Workshop software (optionally extended by Real-Time Workshop Embedded Coder, Real-Time Windows Target, and xPC Target) completes the spiral process. It closes the rapid prototyping loop by generating and optimizing code for given tasks and production environments.

The figure below illustrates where products from The MathWorks, including the Real-Time Workshop product, help you in your development process.



Early in the design process, you use the MATLAB and Simulink software to help you formulate your objectives, problems, and constraints to create your initial design. The Real-Time Workshop software speeds up models by enabling high-speed Simulink Accelerator simulations and by model referencing, which includes models in other models as blocks.

After you have a functional model, you might need to tune your model's parameters. You can do this quickly using the Real-Time Workshop Rapid Simulation Target for Monte Carlo and other batch-oriented simulations (varying coefficients over many simulations).

Once you have tuned your model, you can move into system development testing by exercising your model on a rapid prototyping system, such as the Real-Time Windows Target or xPC Target software. With a rapid prototyping target, you connect your model to your physical system. This lets you locate design flaws and modeling errors quickly.

After you create your prototype system and verify its outputs, you can use the Real-Time Workshop Embedded Coder software to deploy generated code on your custom target. The signal monitoring and parameter tuning capabilities enable you to easily integrate the embedded code into a production environment equipped with debugging and upgrade capabilities. See the Real-Time Workshop Embedded Coder documentation for an overview of this process. First, however, see “Real-Time Workshop® Workflow” on page 2-2 for a process view of using the Real-Time Workshop software.

For a more detailed discussion on applications of the Real-Time Workshop product and how and when you might use it during system development, see “Introduction to Real-Time Workshop Technology” in the Real-Time Workshop documentation.

Installing the Real-Time Workshop® Software

In this section...

“Installation Requirements” on page 1-11

“Supported Third-Party Compilers” on page 1-12

“Compiler Optimization Settings” on page 1-12

“Troubleshooting Third-Party Windows® Compiler Configurations” on page 1-13

Installation Requirements

Your platform-specific MATLAB® installation documentation provides all the information you need to install the Real-Time Workshop® software.

Before installing the software, you must obtain a License File or Personal License Password (PLP) from The MathWorks. The License File or PLP identifies the products you are permitted to install and use.

If you customize your installation, the installer displays a dialog box that lets you select the MATLAB products to install. You can select and install only products for which you are licensed.

The Simulink®, Real-Time Workshop, and Real-Time Workshop® Embedded Coder™ products each have prerequisites for proper installation and execution, described in the following table.

Licensed Product	Prerequisite Products	Additional Information
Simulink	MATLAB	Allows installation of Simulink
Real-Time Workshop	Simulink	Requires LCC, Microsoft® Visual C or Microsoft® Visual C++® Professional, or Watcom C compiler to create MATLAB MEX-files or other executables on your platform
Real-Time Workshop Embedded Coder	Real-Time Workshop	—

If you experience installation difficulties and have Web access, use the resources available on the MathWorks™ Web site Support page Installation and Licensing section at <http://www.mathworks.com/support/>.

Supported Third-Party Compilers

Most Real-Time Workshop targets create an executable that runs on your workstation. When creating the executable, the Real-Time Workshop build process must be able to access an appropriate compiler. The build process can automatically find a compiler to use based on your default MEX compiler.

For more about third party compilers, see “Choosing and Configuring a Compiler” in the Real-Time Workshop documentation. For details on supported compiler versions, see

<http://www.mathworks.com/support/tech-notes/1600/1601.shtml>

Compiler Optimization Settings

In some very rare instances, because of compiler defects, compiler optimizations applied to Real-Time Workshop generated code can cause the executable program to produce incorrect results, even though the code itself is correct.

The Real-Time Workshop build process uses the default optimization level for each supported compiler. You can usually work around problems caused by compiler optimizations by lowering the optimization level of the compiler or by turning off optimizations. Refer to your compiler’s documentation for information on how to do this.

Out-of-Environment Error Message

If you receive out-of-environment space error messages, right-click your mouse on the program that is causing the problem (for example, `dosprmt` or `autoexec.bat`) and choose **Properties**. From there choose **Memory**. Set the Initial Environment to the maximum allowed and click **Apply**. This should increase the amount of environment space available.

Troubleshooting Third-Party Windows® Compiler Configurations

This section provides compiler-specific configuration instructions. If you have problems with Microsoft Windows® compiler configuration, first ensure that MATLAB supports the compiler and version that you want to use. For a complete list of supported compilers and versions, see

<http://www.mathworks.com/support/tech-notes/1600/1601.shtml>

LCC

The freeware LCC C compiler is shipped with MATLAB, and is installed with the product. If you want to use LCC to build programs generated by the Real-Time Workshop software, use the version that is currently shipped with the product. Information about LCC is available at <http://www.cs.virginia.edu/~lcc-win32/>.

Microsoft® Visual C or Microsoft® Visual C++®

Use the MATLAB command

```
mex -setup
```

to define the environment for Visual C/C++. Note that only the Professional version is supported.

Watcom

The Watcom C compiler is no longer available from the manufacturer. Development of this compiler has been taken over by the Open Watcom organization (<http://www.openwatcom.org>), which has released a binary patch update (11.0c) for existing Watcom C/C++ and Fortran customers. The Real-Time Workshop software continues to ship with Watcom-related target configurations. However, this policy may be subject to change in the future.

Make sure that your Watcom environment variable is defined and correctly points to the directory in which your Watcom compiler resides. To check this, type

```
set WATCOM
```

at the DOS prompt. Check the return from this command to see whether the WATCOM environment variable is defined and points to the Watcom compiler.

If the WATCOM environment variable is not defined, you must define it to point to where you installed your Watcom compiler. Launch the **System** control panel, click the **Advanced** tab, click **Environment Variables**, and define WATCOM to be the path to your compiler.

Real-Time Workshop® Demos

A good way to familiarize yourself with the Real-Time Workshop® code generator is by browsing through its suite of demos, running the ones of interest, and then inspecting code generated from these demo models. The demos illustrate many (but not all) Real-Time Workshop features.

To access the current set of Real-Time Workshop demos, type

```
rtwdemos
```

at the MATLAB® prompt. You can also find Real-Time Workshop demos by navigating to **Real-Time Workshop**, (found under **Simulink**) in the **Demos** pane of the Help browser.

Note that many of the Real-Time Workshop demos illustrate features of the Real-Time Workshop product, and are thus set up to generate code for the ERT target. If MATLAB does not find a Real-Time Workshop® Embedded Coder™ license on your system, you can still run the demos, but all code generated defaults to the GRT target.

MathWorks Products Supported by the Real-Time Workshop® Software

Many blocksets and other MathWorks™ products can work with the Real-Time Workshop® software. The following table lists products that the Real-Time Workshop and Real-Time Workshop® Embedded Coder™ software support.

Product	Real-Time Workshop Support	Real-Time Workshop Embedded Coder Support
Aerospace Blockset™	Yes	Yes
Communications Blockset™	Yes	Yes
Control System Toolbox™	Yes	Yes
Gauges Blockset™	Yes	Yes
Fuzzy Logic Toolbox™	Yes	Yes
Embedded IDE Link™ VS	Yes	Yes
Embedded IDE Link CC	Yes	Yes
Embedded IDE Link MU	Yes	Yes
Embedded IDE Link TS	Yes	Yes
MATLAB®	Yes Details: Supports Embedded MATLAB™	Yes Details: Supports Embedded MATLAB
Model Predictive Control Toolbox™	Yes	Yes
Model-Based Calibration Toolbox™	Yes	Yes
Real-Time Windows Target™	Yes	No

Product	Real-Time Workshop Support	Real-Time Workshop Embedded Coder Support
Signal Processing Blockset™	Yes Details: “Block Data Type Support Table” in the Signal Processing Blockset documentation	Yes Details: “Block Data Type Support Table” in the Signal Processing Blockset documentation
SimDriveline™	Yes	Yes
SimHydraulics®	Yes	Yes
SimMechanics™	Yes	Yes
SimPowerSystems™	Yes	No
Simscape™	Yes	Yes
Simulink®	Yes Details: “Simulink Block Support” Table in the Real-Time Workshop documentation	Yes Details: “Simulink Block Support” Table in the Real-Time Workshop documentation
Simulink® Fixed Point™	Yes	Yes
Simulink® Parameter Estimation™	Yes	Yes
Simulink® Report Generator™	Yes	Yes
Simulink® Verification and Validation™	Yes	Yes
Stateflow® and Stateflow® Coder™	Yes	Yes
Target Support Package™ FM5	Yes	Yes
Target Support Package IC1	Yes	Yes
Target Support Package TC2	Yes	Yes
Target Support Package TC6	Yes	Yes

Product	Real-Time Workshop Support	Real-Time Workshop Embedded Coder Support
Video and Image Processing Blockset™	Yes	Yes
Virtual Reality Toolbox™	Yes	Yes
xPC Target™	Yes	Yes
xPC Target Embedded Option	Yes	Yes

Help and Documentation

In this section...
“Prerequisites” on page 1-19
“Online Documentation” on page 1-19
“For Further Information” on page 1-20

Prerequisites

Real-Time Workshop® software is shipped with this Getting Started guide. Users of this book should be familiar with

- Using the Simulink® and Stateflow® software to create models/machines as block diagrams, running such simulations in Simulink, and interpreting output in the MATLAB® workspace
- High-level programming language concepts applied to real-time systems

While you do not need to program in C or other programming languages to create, test, and deploy real-time systems using the Real-Time Workshop software, successful emulation and deployment of real-time systems requires familiarity with parameters and design constraints. The Real-Time Workshop documentation assumes you have a basic understanding of real-time system concepts, terminology, and environments. The documentation is available in the following locations:

- Online at <http://www.mathworks.com>
- Through the MATLAB Help browser
- As PDF documents that you can view online or print

Online Documentation

Access to the online Real-Time Workshop information is through MATLAB or from the MathWorks™ Web site at <http://www.mathworks.com/support/>. Click the **Documentation** link.

To access the documentation with the MATLAB Help browser, use the following procedure:

- 1** In the MATLAB window, click **Help > Product Help**, or click the **?** icon on the toolbar.

The Help browser window opens.

- 2** In the left pane, click the **Real-Time Workshop** book icon.

The Help browser displays the Real-Time Workshop roadmap page in the right pane. Click any link there, or click the + sign to the left of the book icon in the left pane to reveal the table of contents. When you do so, the + changes to a -.

For Further Information

The Real-Time Workshop User's Guide documents, in detail, the capabilities of the Real-Time Workshop product. For a topical overview of its contents, see "Introduction to Real-Time Workshop Technology" in the Real-Time Workshop documentation.

You can customize Real-Time Workshop output at the block, target, and makefile levels. For advanced uses, you might have to prepare or modify Target Language Compiler files, as explained in the Target Language Compiler documentation.

Building an Application

This chapter expands the high-level discussion of code generation and the build process given in Chapter 1, “Introduction”. It provides a foundation of understanding for tutorial exercises in Chapter 3, “Working with the Real-Time Workshop® Software”.

Real-Time Workshop® Workflow
(p. 2-2)

Explains the typical workflow for applying the Real-Time Workshop® software to the application development process

Automatic Program Building
(p. 2-13)

Describes the flow of control for code generation

Build Process (p. 2-15)

Describes the sequence of events that takes place when you click the Build button, including the files that the Target Language Compiler uses and creates

Real-Time Workshop® Workflow

In this section...
“Workflow Overview” on page 2-2
“Mapping Application Requirements to Configuration Options” on page 2-4
“Adjusting Configuration Settings” on page 2-5
“Running Model Advisor” on page 2-6
“Generating Code” on page 2-8
“Building an Executable Program” on page 2-8
“Verifying the Executable Program” on page 2-9
“Naming and Saving the Configuration Set” on page 2-10
“Documenting the Project” on page 2-11

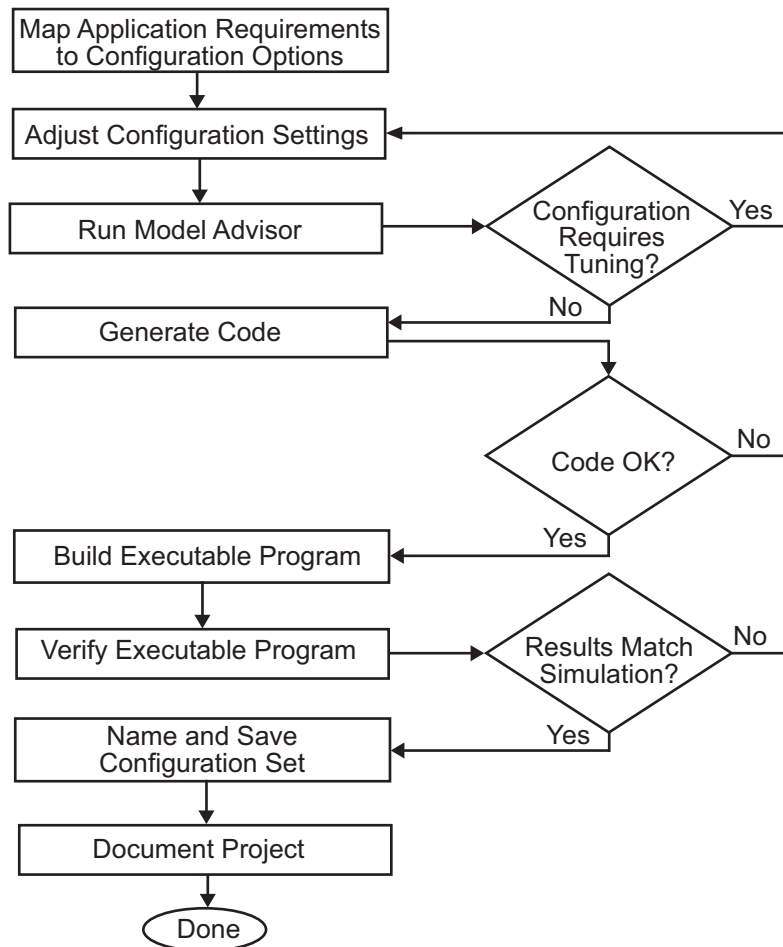
Workflow Overview

The typical workflow for applying the Real-Time Workshop® software to the application development process involves the following steps:

- 1** Map your application requirements to available configuration options.
- 2** Adjust configuration options as necessary.
- 3** Run the Model Advisor tool.
- 4** If necessary, tune configuration options based on the Model Advisor report.
- 5** Generate code for your model.
- 6** Repeat steps 2 to 5 if necessary.
- 7** Build an executable program image.
- 8** Verify that the generated program produces results that are equivalent to those of your model simulation.
- 9** Save the configuration, and alternative ones with the model.

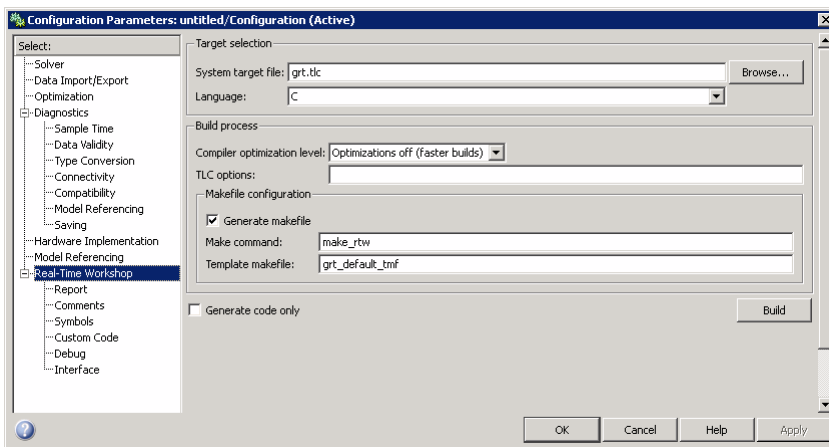
10 Use Simulink® Report Generator™ to automatically document the project.

The following figure shows these steps in a flow diagram. Sections following the figure discuss the steps in more detail.



Mapping Application Requirements to Configuration Options

The first step in applying the Real-Time Workshop software to the application development process is to consider how your application requirements, particularly with respect to debugging, traceability, efficiency, and safety, map to code generation options available through the Simulink® Configuration Parameters dialog box. The following screen display shows the **Real-Time Workshop** pane of the Configuration Parameters dialog box.



Parameters that you set in the various panes of the Configuration Parameters dialog box affect the behavior of a model in simulation and the code generated for the model. The Real-Time Workshop software automatically adjusts the available configuration parameters and their default settings based on your target selection. For example, the preceding dialog box display shows default settings for the generic real-time (GRT) target. However, you should become familiar with the various parameters and be prepared to adjust settings to optimize a configuration for your application.

As you review the parameters, consider questions such as the following:

- What settings will help you debug your application?
- What is the highest priority for your application — traceability, efficiency, extra safety precaution, or some other criterion?

- What is the second highest priority?
- Can the priority at the start of the project differ from the priority required for the end? What tradeoffs can be made?

Once you have answered these questions, review “Recommended Settings Summary”, which summarizes the impact of each configuration option on debugging, traceability, efficiency, and safety precautions, and indicates the default (factory) configuration settings for the GRT target. For additional details, click the links in the Configuration Parameter column.

Note If you use a Real-Time Workshop® Embedded Coder™ target, a specific embedded target, a Stateflow® target, or fixed-point blocks, you need to consider the mapping of many other configuration parameters. For details, see the Real-Time Workshop Embedded Coder documentation and any other documentation specific to your target environment.

Adjusting Configuration Settings

Once you have mapped your application requirements to appropriate configuration parameter settings, adjust the settings accordingly. Using the Default column in “Mapping Application Requirements to the Solver Pane”, identify the configuration parameters you need to modify. Then, open the Configuration Parameters dialog box or Model Explorer and make the necessary adjustments.

Tutorials in Chapter 3, “Working with the Real-Time Workshop® Software” guide you through exercises that modify configuration parameter settings. For details on the configuration parameters that pertain to code generation, see “Code Generation and the Build Process” in the Real-Time Workshop documentation.

Note In addition to using the Configuration Parameters dialog box, you can use `get_param` and `set_param` to individually access most configuration parameters both interactively and in scripts. The configuration parameters you can get and set are listed in the “Parameter Reference” in the Real-Time Workshop documentation.

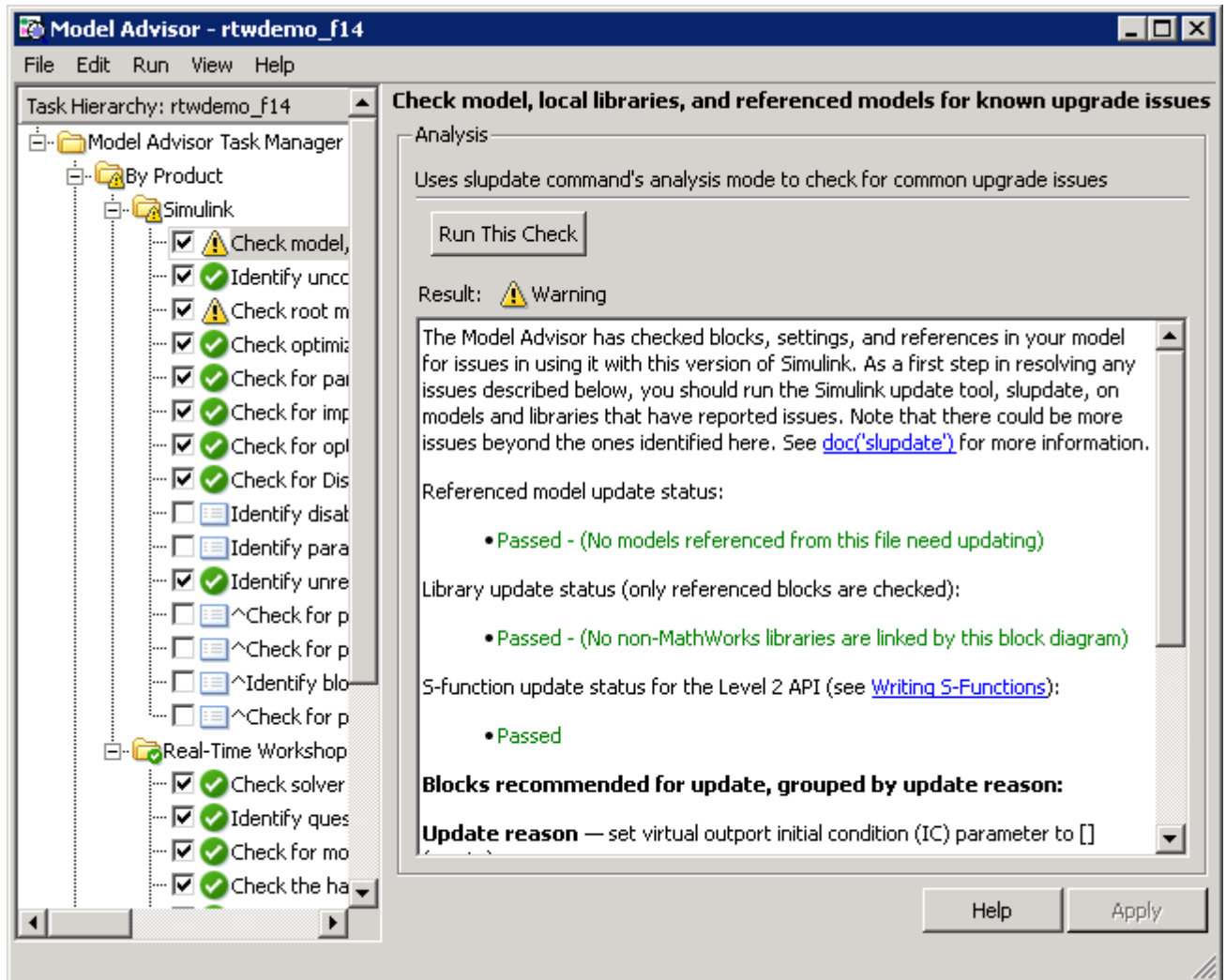
Running Model Advisor

Before you generate code, it is good practice to run the Model Advisor. Based on a list of options you select, this tool analyzes your model and its parameter settings, and generates a report that lists findings with advice on how to correct and improve the model and its configuration.

One way of starting the Model Advisor is to select **Tools > Model Advisor** in your model window. A new window appears listing specific diagnostics you can selectively enable or disable. Some examples of the diagnostics follow:

- Identify blocks that generate expensive saturation and rounding code
- Check optimization settings
- Identify questionable software environment specifications

Although you can use the Model Advisor to improve model simulation, it is particularly useful for identifying aspects of your model that limit code efficiency or impede deployment of production code. The following figure shows the Model Advisor.



For more information on using the Model Advisor, see “Using the Model Advisor” in the Real-Time Workshop documentation.

Generating Code

After fine-tuning your model and its parameter settings, you are ready to generate code. Typically, the first time through the process of applying The Real-Time Workshop software for an application, you want to generate code without going on to compile and link it into an executable program. Some reasons for doing this include the following:

- You want to inspect the generated code. Is the Real-Time Workshop code generator creating what you expect?
- You need to integrate custom handwritten code.
- You want to experiment with configuration option settings.

You specify code generation only by selecting the **Generate code only** check box available on the **Real-Time Workshop** pane of the Configuration Parameters dialog box (thus changing the label of the **Build** button to **Generate code**). The Real-Time Workshop code generator responds by analyzing the block diagram that represents your model, generating C code, and placing the resulting files in a build directory within your current working directory.

After generating the code, inspect it. Is it what you expected? If not, determine what model and configuration changes you need to make, rerun the Model Advisor, and regenerate the code. When you are satisfied with the generated code, build an executable program image, as explained in “Building an Executable Program” on page 2-8.

For a more detailed discussion of the code generation process, see “Automatic Program Building” on page 2-13 and “Build Process” on page 2-15. For details on the **Generate code only** option, see “Generating Code Only” in the Real-Time Workshop documentation.

Building an Executable Program

When you are satisfied with the code generated for your model, build an executable program image. If it is currently selected, you need to clear the

Generate code only option on the **Real-Time Workshop** pane of the Configuration Parameters dialog box. This changes the label of the **Generate code** button back to **Build**.

One way of initiating a build is to click the **Build** button. The Real-Time Workshop code generator responds by

- 1 Generating the C code, as explained in “Generating Code” on page 2-8.
- 2 Creating a customized makefile based on a template makefile for your target of choice and placing the makefile in the build directory.
- 3 Instructing your system’s make utility to use the generated makefile to compile the generated source code, link object files and libraries, and generate an executable program file called *model* (UNIX®) or *model.exe* (Microsoft® Windows®). The executable image resides in your working directory.

For a more detailed discussion of the build process, see “Automatic Program Building” on page 2-13 and “Build Process” on page 2-15.

Verifying the Executable Program

Once you have an executable image, run the image and compare the results to the results of your model’s simulation. You can do this by

- 1 Logging output data produced by simulation runs
- 2 Logging output data produced by executable program runs
- 3 Comparing the results of the simulation and executable program runs

Does the output match? Are you able to explain any differences? Do you need to eliminate any differences? At this point, it might be necessary to revisit and possibly fine-tune your block and configuration parameter settings.

For an example, see “Code Verification” on page 3-24.

Naming and Saving the Configuration Set

When you close a model, you should save it to preserve your configuration settings (unless you regard your recent changes as dispensable). If you want to maintain several alternative configurations for a model (e.g., GRT and Rapid Simulation targets, inline parameters on/off, different solvers, etc.), you can set up a configuration set for each set of configuration parameters and give it an identifying name. You can do this easily in Model Explorer.

To name and save a configuration,

- 1 Open Model Explorer by selecting **Model Explorer** from the model's **View** menu.
- 2 In the **Model Hierarchy** pane, click the + sign preceding the model name to reveal its components.
- 3 Click the **Configuration (active)** node under the model name.

The Configuration Parameters dialog box appears in the right pane.

- 4 In the **Configuration Parameters** pane, type a name you want to give the current configuration in the **Name** field.
- 5 Click **Apply**. The name of the active configuration in the **Model Hierarchy** pane changes to the name you typed.
- 6 Save the model.

Adding and Copying Configuration Sets

You can save the model with more than one configuration so that you can instantly reconfigure it at a later time. To do this, copy the active configuration to a new one, or add a new one, then modify and name the new configuration, as follows:

- 1 Open Model Explorer by selecting **Model Explorer** from the model's **View** menu.
- 2 In the **Model Hierarchy** pane, click the + sign preceding the model name to reveal its components.

- 3 To add a new configuration set, while the model is selected in the **Model Hierarchy** pane, select **Configuration Set** from the **Add** menu, or click the yellow gear icon on the toolbar:



A new configuration set named Configuration appears in the **Model Hierarchy** pane.

- 4 To copy an existing configuration set, right-click its name in the **Model Hierarchy** pane and drag it to the + sign in front of the model name.

A new configuration set with a numeral (e.g., 1) appended to its name appears lower in the **Model Hierarchy** pane.

- 5 If desired, rename the new configuration by right-clicking it, selecting **Properties**, and typing the new name in the **Name** field on the Configuration Parameters dialog box that appears. Then click the **Apply** button.
- 6 Make the new configuration the active one by right-clicking it in the **Model Hierarchy** pane and selecting **Activate** from the context menu.

The content of the **Is Active** field in the right pane changes from **no** to **yes**.

- 7 Save the model.

Documenting the Project

Consider documenting the design and implementation details of your project to facilitate

- Project verification and validation
- Collaboration with other individuals or teams, particularly if dependencies exist
- Archiving the project for future reference

One way of documenting a Real-Time Workshop code generation project is to use the Simulink Report Generator software. You can generate a

comprehensive Rich Text Format (RTF), Extensible Markup Language (XML), or Hypertext Markup Language (HTML) report that includes the following information:

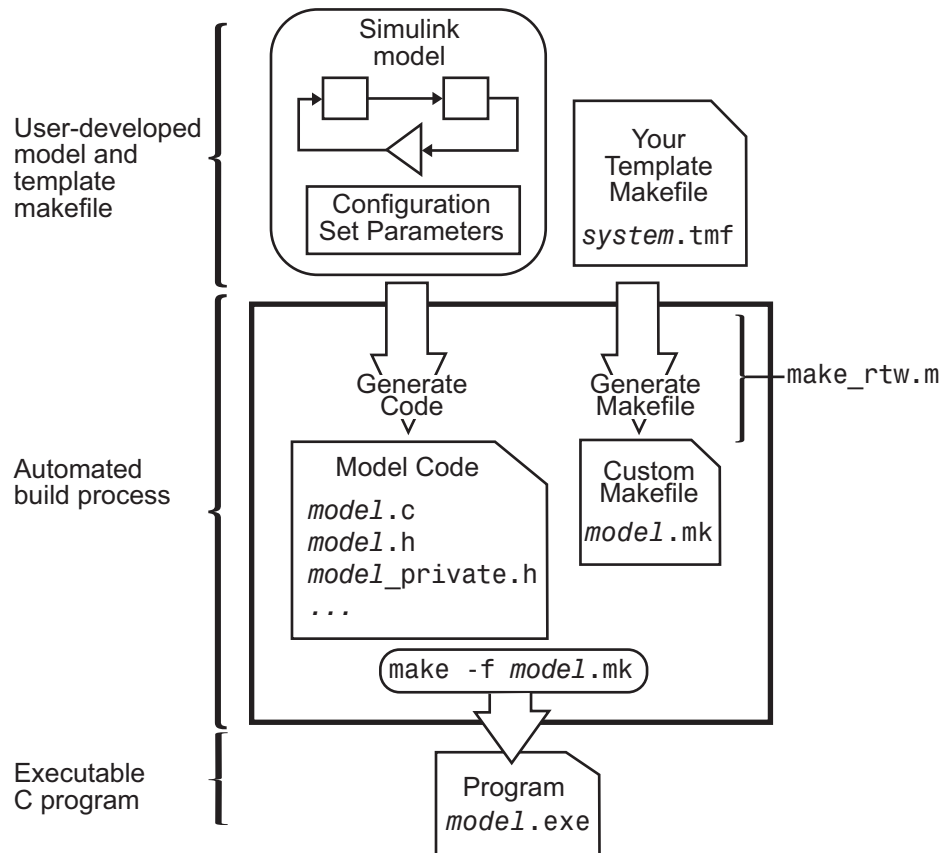
- Model name and version
- Real-Time Workshop product version
- Date and time the code generator created the code
- List of generated source and header (include) files
- Optimization and Real-Time Workshop target selection and build process configuration settings
- Mapping of subsystem numbers to subsystem labels
- Listings of generated and custom code for the model

To get started with generating a code generation report, see the demo `rtwdemo_codegenrpt` and tutorial “Documenting a Code Generation Project” on page 3-67. For details on using the Report Generator, see the *Simulink Report Generator User’s Guide*.

Automatic Program Building

The Real-Time Workshop® software builds programs automatically for real-time applications in a variety of host environments. Using the make utility, the Real-Time Workshop software controls how it compiles and links the generated source code.

The following figure illustrates the complete process. The box labeled “Automated build process” highlights portions of the process that the Real-Time Workshop software executes.



The M-file specified by the **Make command** field in the **Build process** section of the **Real-Time Workshop** pane of the Configuration Parameters dialog box controls an internal portion of the Real-Time Workshop build process. By default, the name of the M-file command is `make_rtw`; the Real-Time Workshop build process invokes this M-file for most targets. Any options specified in this field will be passed into the makefile-based build process. In some cases, targets will customize the `make_rtw` command. However, the arguments used by the function must be preserved.

Although the command may work for a stand-alone model, use of the `make_rtw` command at the command line can be error prone. For example, if you have multiple models open, you need to make sure the current subsystem, found by entering `gcs` in the MATLAB® command window, contains the model you want to build. Also, some target environments supply a **Make command** in the Configuration Parameters dialog box that is not `make_rtw`. Finally, models containing Model blocks do not build by using `make_rtw` directly.

To build (or generate code for) a model as currently configured from the MATLAB Command Window, use one of the following `rtwbuild` commands, where *model* is the name of the model:

```
rtwbuild model
rtwbuild('model')
```

Build Process

In this section...

“Build Process Steps” on page 2-15

“Model Compilation” on page 2-17

“Code Generation” on page 2-17

“Customized Makefile Generation” on page 2-18

“Executable Program Generation” on page 2-19

“Files and Directories Created by the Build Process” on page 2-20

Build Process Steps

The Real-Time Workshop® software generates C code only or generates the C code and produces an executable image, depending on the level of processing you choose. By default, a **Build** button appears on the **Real-Time Workshop** pane of the Configuration Parameters dialog box. This button completes the entire build process and an executable image results. If you select the **Generate code only** check box to the left of the button, the button label changes to **Generate code**.

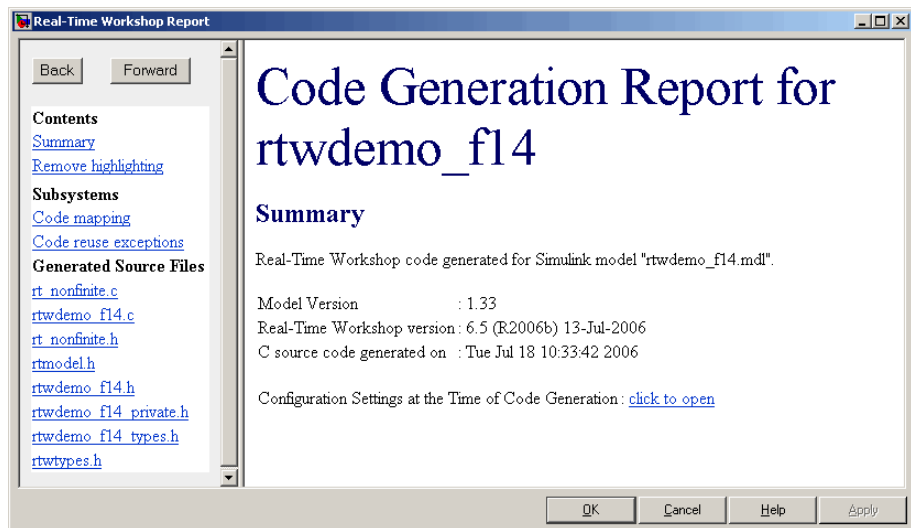
When you click the **Build** or **Generate code** button, the Real-Time Workshop software performs the following build process. If the software detects code generation constraints for your model, it issues warning or error messages.

- 1 “Model Compilation” on page 2-17 — The Real-Time Workshop software analyzes your block diagram (and any models referenced by Model blocks) and compiles an intermediate hierarchical representation in a file called *model.rtw*.
- 2 “Code Generation” on page 2-17 — The Target Language Compiler reads *model.rtw*, translates it to C code, and places the C file in a build directory within your working directory.

When you click **Generate code**, processing stops here.

- 3 “Customized Makefile Generation” on page 2-18 — The Real-Time Workshop software constructs a makefile from the appropriate target makefile template and writes it in the build directory.
- 4 “Executable Program Generation” on page 2-19 — Your system’s make utility reads the makefile to compile source code, link object files and libraries, and generate an executable image, called *model* (UNIX® platforms) or *model.exe* (Microsoft® Windows® platforms). The makefile places the executable image in your working directory.

If you select **Create code generation report** on the **Real-Time Workshop > Report** pane, a navigable summary of source files is produced when the model is built. The report files occupy a directory called `html` within the build directory. The report contents vary depending on the target, but all reports feature links to generated source files. The following display shows an example of an HTML code generation report for a generic real-time (GRT) target.



For more information, see “Configuring Report Generation” in the Real-Time Workshop documentation. You can also view an HTML report in **Model Explorer**. See the last part of “Generating Code for a Referenced Model” on page 3-55 for details.

Details about each of the four steps in the process follow.

Model Compilation

The build process begins with the Simulink® software compiling the block diagram. During this stage, Simulink

- Evaluates simulation and block parameters
- Propagates signal widths and sample times
- Determines the execution order of blocks within the model
- Computes work vector sizes, such as those used by S-functions. (For more information about work vectors, see the Simulink Writing S-Functions documentation).

When Simulink completes this processing, it compiles an intermediate representation of the model. This intermediate description is stored in a language-independent format in the ASCII file *model.rtw*. The *model.rtw* file is the input to the next stage of the build process.

model.rtw files are similar in format to Simulink model (.mdl) files, but are used only for automated code generation. For a general description of the *model.rtw* file format, see the Target Language Compiler documentation.

Code Generation

The Real-Time Workshop code generator uses the Target Language Compiler (TLC) and a supporting TLC function library to transform the intermediate model description stored in *model.rtw* into target-specific code.

The target language compiled by the TLC is an interpreted programming language designed to convert a model description to code. The TLC executes a TLC program comprising several target files (.t1c scripts). The TLC scripts specify how to generate code from the model, using the *model.rtw* file as input.

The TLC

- 1 Reads the *model.rtw* file
- 2 Compiles and executes commands in a system target file

The system target file is the entry point or main file. You select it from those available on the MATLAB® path with the system target file browser or you can type the name of any such file on your system prior to building.

3 Compiles and executes commands in block-level target files

For blocks in the Simulink model, there is a corresponding target file that is either dynamically generated or statically provided.

Note The Real-Time Workshop software executes all user-written S-function target files, but optionally executes block target files for Simulink blocks.

4 Writes a source code version of the Simulink block diagram

Customized Makefile Generation

After generating the code, the Real-Time Workshop software generates a customized makefile, *model.mk*. The generated makefile instructs the make system utility to compile and link source code generated from the model, as well as any required harness program, libraries, or user-provided modules.

The Real-Time Workshop software creates *model.mk* from a system template file, *system.tmf* (where *system* stands for the selected target name). The system template makefile is designed for your target environment. You have the option of modifying the template makefile to specify compilers, compiler options, and additional information used during the creation of the executable.

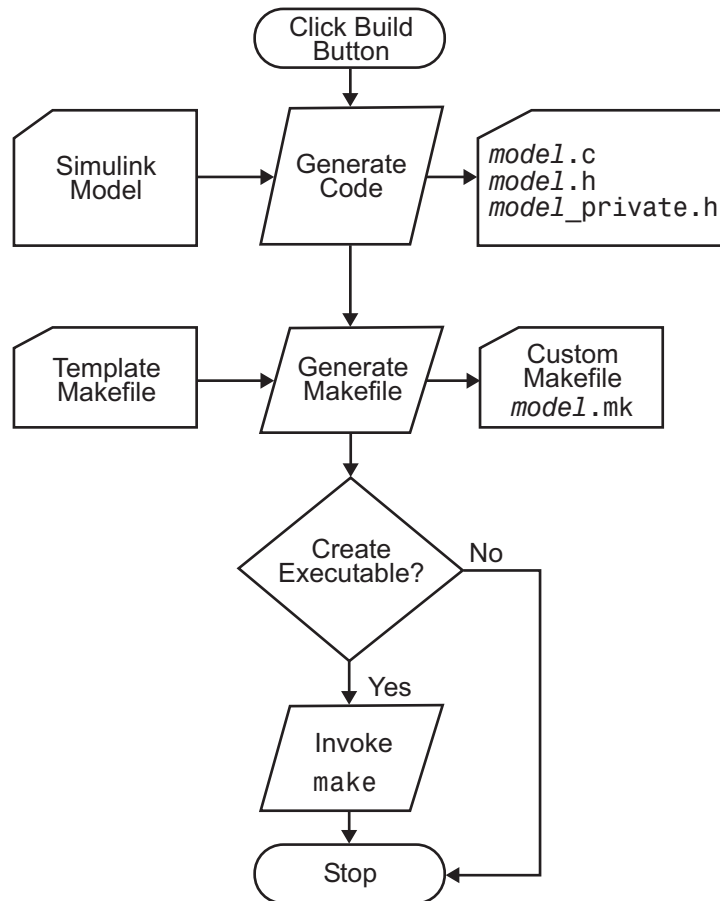
The Real-Time Workshop software creates the *model.mk* file by copying the contents of *system.tmf* and expanding lexical tokens (symbolic names) that describe your model's configuration.

The Real-Time Workshop software provides many system template makefiles, configured for specific target environments and development systems. “Selecting a System Target File” in the Real-Time Workshop documentation lists all template makefiles that are bundled with the Real-Time Workshop software. To see an example template makefile, navigate to `matlabroot/rtw/c/grt`, and open with an editor the file `grt_msvc.tmf`.

You can fully customize your build process by modifying an existing template makefile or providing your own template makefile.

Executable Program Generation

The following figure shows how the Real-Time Workshop software controls automatic program building.



During the final stage of processing, the Real-Time Workshop build process invokes the generated makefile, *model.mk*, which in turn compiles and links the generated code. On PC platforms, a batch file is created to invoke the

generated makefile. The batch file sets up the proper environment for invoking the make utility and related compiler tools. To avoid unnecessary recompilation of C files, the make utility performs date checking on the dependencies between the object and C files; only out-of-date source files are compiled. Optionally, the makefile can download the resulting executable image to your target hardware.

This stage is optional, as illustrated by the control logic in the preceding figure. You might choose to omit this stage, for example, if you are targeting an embedded microcontroller or a digital signal processing (DSP) board.

To omit this stage of processing, select the **Generate code only** check box on the **Real-Time Workshop** pane of the Configuration Parameters dialog box. You can then cross-compile your code and download it to your target hardware. “Interacting with the Build Process” in the Real-Time Workshop documentation discusses the options that control whether or not the build creates an executable image.

Files and Directories Created by the Build Process

The following sections discuss

- “Files Created During Build Process” on page 2-20
- “Directories Used During the Build Process” on page 2-25

Files Created During Build Process

This section lists *model.** files created during the code generation and build process for the GRT and GRT malloc targets when used with stand-alone models. Additional directories and files are created to support shared utilities and model references (see “Building Subsystems and Working with Referenced Models” in the Real-Time Workshop documentation).

The build process derives many of the files from the *model.mdl* file you create with Simulink. You can think of the *model.mdl* file as a very high-level programming language source file.

Note Files generated by the Real-Time Workshop® Embedded Coder™ build process are packaged slightly differently. Depending on model architectures and code generation options, the Real-Time Workshop build process might generate other files.

Descriptions of the principal generated files follow. Note that these descriptions use the generic term *model* for the model name:

- *model.rtw*

An ASCII file, representing the compiled model, generated by the Real-Time Workshop build process. This file is analogous to the object file created from a high-level language source program. By default, the Real-Time Workshop build process deletes this file when the build process is complete. However, you can choose to retain the file for inspection.

- *model.c*

C source code that corresponds to *model.mdl* and is generated by the Target Language Compiler. This file contains

- Include files *model.h* and *model_private.h*
- All data except data placed in *model_data.c*
- Model-specific scheduler code
- Model-specific solver code
- Model registration code
- Algorithm code
- Optional GRT wrapper functions

- *model.h*

Defines model data structures and a public interface to the model entry points and data structures. Also provides an interface to the real-time model data structure (*model_rtm*) via access macros. *model.h* is included by subsystem *.c* files in the model. It includes

- Exported Simulink data symbols
- Exported Stateflow® machine parented data

- Model data structures, including `rtM`
- Model entry point functions
- `model_private.h`

Contains local define constants and local data required by the model and subsystems. This file is included by the generated source files in the model. You might need to include `model_private.h` when interfacing legacy hand-written code to a model. See “Header Dependencies When Interfacing Legacy/Custom Code with Generated Code” in the Real-Time Workshop documentation for more information. This header file contains

 - Imported Simulink data symbols
 - Imported Stateflow machine parented data
 - Stateflow entry points
 - Real-Time Workshop details (various macros, enums, and so forth that are private to the code)
- `model_types.h`

Provides forward declarations for the real-time model data structure and the parameters data structure. These might be needed by function declarations of reusable functions. `model_types.h` is included by all the generated header files in the model.
- `model_data.c`

A conditionally generated C source code file containing declarations for the parameters data structure and the constant block I/O data structure, and any zero representations for structure data types that are used in the model. If these data structures are not used in the model, `model_data.c` is not generated. Note that these structures are declared extern in `model.h`. When present, this file contains

 - Constant block I/O parameters
 - Include files `model.h` and `model_private.h`
 - Definitions for the zero representations for any user-defined structure data types used by the model
 - Constant parameters

- `model.exe` (Microsoft Windows platforms) or `model` (UNIX platforms), generated in the current directory, not in the build directory

Executable program file created under control of the make utility by your development system (unless you have explicitly specified that Real-Time Workshop generate code only and skip the rest of the build process)

- `model.mk`

Customized makefile generated by the Real-Time Workshop build process. This file builds an executable program file.

- `rtmodel.h`

Contains `#include` directives required by static main program modules such as `grt_main.c` and `grt_malloc_main.c`. Since these modules are not created at code generation time, they include `rt_model.h` to access model-specific data structures and entry points. If you create your own main program module, take care to include `rtmodel.h`.

- `rtwtypes.h`

For GRT targets, a header file that includes `simstruc_types.h`, which, in turn, includes `tmwtypes.h`. For Real-Time Workshop Embedded Coder ERT targets, `rtwtypes.h` itself provides the necessary defines, enums, and so on, instead of including `tmwtypes.h` and `simstruc_types.h`. The `rtwtypes.h` file generated for ERT is an optimized (reduced) file based on the settings provided with the model that is being built. See “Header Dependencies When Interfacing Legacy/Custom Code with Generated Code” in the Real-Time Workshop documentation for more information.

- `rt_nonfinite.c`

C source file that declares and initializes global nonfinite values for `inf`, `minus inf`, and `nan`. Nonfinite comparison functions are also provided. This file is always generated for GRT-based targets and optionally generated for other targets.

- `rt_nonfinite.h`

C header file that defines extern references to nonfinite variables and functions. This file is always generated for GRT-based targets and optionally generated for other targets.

- `rtw_proj.tmw`

Real-Time Workshop file generated for the make utility to use to determine when to rebuild objects when the name of the current Real-Time Workshop project changes

- *model.bat*

Windows batch file used to set up the appropriate compiler environment and invoke the make command

- *modelsources.txt*

List of additional sources that should be included in the compilation.

Optional files:

- *model_targ_data_map.m*

M-file used by external mode to initialize the external mode connection

- *model_dt.h*

C header file used for supporting external mode. Declares structures that contain data type and data type transition information for generated model data structures.

- *subsystem.c*

C source code for each noninlined nonvirtual subsystem or copy thereof when the subsystem is configured to place code in a separate file

- *subsystem.h*

C header file containing exported symbols for noninlined nonvirtual subsystems. Analogous to *model.h*.

- *model_capi.h*

An interface header file between the model source code and the generated C API. See “C-API for Interfacing with Signals and Parameters” in Real-Time Workshop User’s Guide for more information.

- *model_capi.c*

C source file that contains data structures that describe the model’s signals and parameters without using external mode. See “C-API for Interfacing with Signals and Parameters” in Real-Time Workshop User’s Guide for more information.

- `rt_sfcn_helper.h`, `rt_sfcn_helper.c`

Header and source files providing functions needed by noninlined S-functions in a model. The functions `rt_CallSys`, `rt_enableSys`, and `rt_DisableSys` are used when noninlined S-functions call downstream function-call subsystems.

In addition, when you select the **Create code generation report** check box, the Real-Time Workshop software generates a set of HTML files (one for each source file plus a `model_contents.html` index file) in the `html` subdirectory within your build directory.

The above source files have dependency relationships, and there are additional file dependencies that you might need to take into account. These are described in “Generated Source Files and File Dependencies” in the Real-Time Workshop documentation.

Directories Used During the Build Process

the Real-Time Workshop build process places output files in three directories:

- The working directory

If you choose to generate an executable program file, the Real-Time Workshop build process writes the file `model.exe` (Windows) or `model` (UNIX) to your working directory.

- The build directory — `model_target_rtw`

A subdirectory within your working directory. The build directory name is `model_target_rtw`, where `model` is the name of the source model and `target` is the selected target type (for example, `grt` for the generic real-time target). The build directory stores generated source code and all other files created during the build process (except the executable program file).

- Project directory — `s1prj`

A subdirectory within your working directory. When models referenced via Model blocks are built for simulation or Real-Time Workshop code generation, files are placed in `s1prj`. The Real-Time Workshop Embedded Coder configuration has an option that places generated shared code in `s1prj` without the use of model reference. Subdirectories in `s1prj` provide separate places for simulation code, some Real-Time Workshop code, utility

code shared between models, and other files. Of particular importance to Real-Time Workshop users are:

- Header files from models referenced by this model
`slprj/target/model/referenced_model_includes`
- Model reference Real-Time Workshop target files
`slprj/target/model`
- MAT-files used during code generation of model reference Real-Time Workshop target and stand-alone code generation
`slprj/target/model/tmwinternal`
- Shared (fixed-point) utilities
`slprj/target/_sharedutils`

See “Working with Project Directories” on page 3-65 for more information on organizing your files with respect to project directories.

The build directory always contains the generated code modules `model.c`, `model.h`, and the generated makefile `model.mk`.

Depending on the target, code generation, and build options you select, the build directory might also include

- `model.rtw`
- Object files (`.obj` or `.o`)
- Code modules generated from subsystems
- HTML summary reports of files generated (in the `html` subdirectory)
- TLC profiler report files
- Block I/O and parameter tuning information file (`model_capi.c`)
- C API code for parameters and signals
- Real-Time Workshop project (`model.tmw`) files

For additional information about using project directories, see “Project Directory Structure for Model Reference Targets” and “Supporting Shared

Utility Directories in the Build Process” in the Real-Time Workshop documentation.

Working with the Real-Time Workshop[®] Software

This chapter provides hands-on tutorials that help you get started generating code with the Real-Time Workshop[®] software, as quickly as possible. It includes the following topics:

Demonstration Model: rtwdemo_f14 (p. 3-3)	Describes the Simulink [®] model that the first three tutorials use
Building a Generic Real-Time Program (p. 3-4)	Shows how to generate C code from a Simulink demo model and build an executable program
Data Logging (p. 3-16)	Explains how to modify the demonstration program to save data in a MATLAB [®] MAT-file for plotting
Code Verification (p. 3-24)	Demonstrates how to verify a generated program by comparing its output to that of the original model under simulation
First Look at Generated Code (p. 3-30)	Examines code generated for a very simple model, illustrating the effects of some of Real-Time Workshop code generation options
Working with External Mode Using GRT (p. 3-41)	Acquaints you with the basics of using external mode on a single computer, and demonstrates the value of external mode to rapid prototyping

Generating Code for a Referenced Model (p. 3-55)	Introduces generating code for models referenced with Model blocks, and using Model Explorer to browse code files
Documenting a Code Generation Project (p. 3-67)	Explains how to use the Simulink® Report Generator™ software to generate a detailed report for a code generation project

To get the maximum benefit from this book, The MathWorks recommends that you study and work all the tutorials, in the order presented.

These tutorials assume basic familiarity with the MATLAB and Simulink products. You should also read Chapter 2, “Building an Application”, before proceeding.

The procedures for building, running, and testing your programs are almost identical in UNIX® and PC environments. The discussion notes differences where applicable.

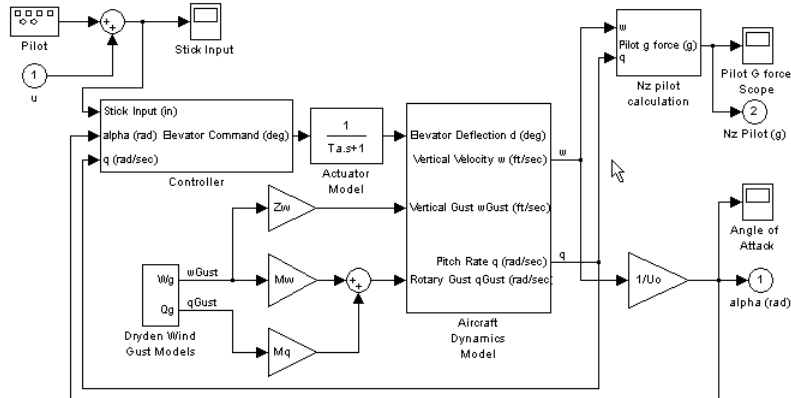
Make sure that a MATLAB compatible C compiler is installed on your system before proceeding with these tutorials. See “Supported Third-Party Compilers” on page 1-12 in the Real-Time Workshop documentation for more information on supported compilers and compiler installation.

Demonstration Model: rtwdemo_f14

The first three tutorials use a demonstration Simulink® model, `rtwdemo_f14.mdl`, from the directory:

`matlabroot/toolbox/rtw/rtwdemos/`

By default, this directory is on your MATLAB® path; `matlabroot` is the location of MATLAB on your system. The `rtwdemo_f14` model represents a simplified flight controller for the longitudinal motion of a Grumman Aerospace F-14 aircraft. The figure below shows the top level of this model.



This model demonstrates the code generated for the F-14 Flight Control System. The model contains a continuous-time controller designed entirely with Simulink blocks. You can build the entire closed-loop model, or selectively a subsystem of interest (i.e., right-click on a subsystem block and select the option Real-Time Workshop --> Build Subsystem ...)

Generate and inspect the code by double-clicking the blue buttons below. An HTML report detailing the code is displayed automatically.

Generate Code Using
Real-Time Workshop
(double-click)

Generate Code Using
Real-Time Workshop
Embedded Coder
(double-click)

The model simulates the pilot's stick input with a square wave having a frequency of 0.5 radians per second and an amplitude of ± 1 . The system outputs are the aircraft angle of attack and the G forces experienced by the pilot. The input and output signals are visually monitored by Scope blocks.

Building a Generic Real-Time Program

In this section...
“Tutorial Overview” on page 3-4
“Working and Build Directories” on page 3-4
“Setting Program Parameters” on page 3-5
“Selecting the Target Configuration” on page 3-8
“Building and Running the Program” on page 3-12
“Contents of the Build Directory” on page 3-14

Tutorial Overview

This tutorial walks through the process of generating C code and building an executable program from the demonstration model. The resulting stand-alone program runs on your workstation, independent of external timing and events.

Working and Build Directories

It is convenient to work with a local copy of the `rtwdemo_f14` model, stored in its own directory, `f14example`. Set up your working directory as follows:

1 In the MATLAB® Current Directory browser, navigate to a directory where you have write access.

2 Create the working directory from the MATLAB command line by typing:

```
mkdir f14example
```

3 Make `f14example` your working directory:

```
cd f14example
```

4 Open the `rtwdemo_f14` model:

```
rtwdemo_f14
```

The model appears in the Simulink® window.

- 5 In the model window, choose **File > Save As**. Navigate to your working directory, `f14example`. Save a copy of the `rtwdemo_f14` model as `f14rtw.mdl`.

During code generation, the Real-Time Workshop® software creates a *build directory* within your working directory. The build directory name is *model_target_rtw*, derived from the name of the source model and the chosen target. The build directory stores generated source code and other files created during the build process. You examine the build directory contents at the end of this tutorial.

Note When a model contains Model blocks (which enable one Simulink model to include others), special *project directories* are created in your working directory to organize code for referenced models. Project directories exist alongside of Real-Time Workshop build directories, and are always named `s1prj`. “Generating Code for a Referenced Model” on page 3-55 describes navigating project directory structures in **Model Explorer**.

Setting Program Parameters

To generate code correctly from the `f14rtw` model, you must change some of the simulation parameters. In particular, note that generic real-time (GRT) and most other targets require that the model specify a fixed-step solver.

Note The Real-Time Workshop software Workshop can generate code for models using variable-step solvers for rapid simulation (`rsim`) and S-function targets only. A Simulink license is checked out when `rsim` targets execute. See “Licensing Protocols for Simulink Solvers in RSim Executables” in the Real-Time Workshop documentation for details.

To set parameters, use the **Model Explorer** as follows:

- 1 Open Model Explorer by selecting **Model Explorer** from the model’s **View** menu.
- 2 In the **Model Hierarchy** pane, click the + sign preceding the model name to reveal its components.

3 Click **Configuration (Active)** in the left pane.

4 Click **Solver** in the center pane. The **Solver** pane appears at the right.

- 5 Enter the following parameter values on the **Solver** pane (some may already be set):

Start Time: 0.0

Stop Time: 60

Solver options:

Type: Fixed-step

Solver: ode5 (Dormand-Prince)

Fixed step size: 0.1

Tasking mode: SingleTasking

The **Solver** pane with the modified parameter settings is shown below. Note the tan background color of the controls you just changed. The color also appears on fields that were set automatically by your choices in other fields. Use this visual feedback to verify that what you set is what you intended. When you apply your changes, the background color reverts to white.

Solver

Simulation time

Start time: 0.0 Stop time: 60

Solver options

Type: Fixed-step Solver: ode5 (Dormand-Prince)

Fixed-step size (fundamental sample time): 0.1

Tasking and sample time options

Periodic sample time constraint: Unconstrained

Tasking mode for periodic sample times: SingleTasking

Automatically handle rate transition for data transfer

Deterministic data transfer: Whenever possible

Higher priority value indicates higher task priority

? Revert Help Apply

- 6** Click **Apply** to register your changes.
- 7** Save the model. Simulation parameters persist with the model, for use in future sessions.

Selecting the Target Configuration

Note Some of the steps in this section do not require you to make changes. They are included to help you familiarize yourself with the Real-Time Workshop user interface. As you step through the dialog boxes, place the mouse pointer on any item of interest to see a tooltip describing its function.

To specify the desired target configuration, you choose a system target file, a template makefile, and a make command.

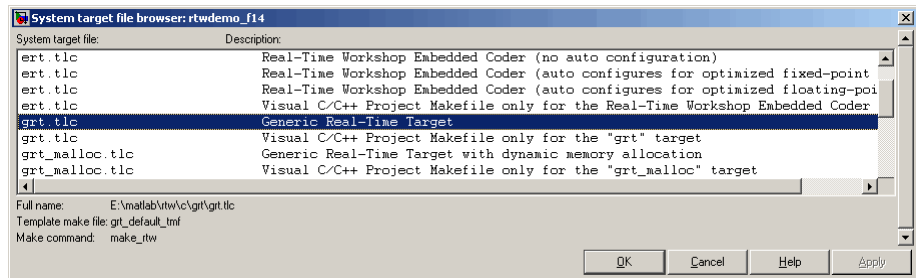
In these tutorials (and in most applications), you do not need to specify these parameters individually. Here, you use the ready-to-run generic real-time target (GRT) configuration. The GRT target is designed to build a stand-alone executable program that runs on your workstation.

To select the GRT target via the **Model Explorer**:

- 1** Open Model Explorer by selecting **Model Explorer** from the model's **View** menu.
- 2** In the **Model Hierarchy** pane, click the + sign preceding the model name to reveal its components.
- 3** Click **Configuration (Active)** in the left pane.
- 4** Click **Real-Time Workshop** in the center pane. The **Real-Time Workshop** pane appears at the right. This pane has several tabs.
- 5** Click the **General** tab to activate the pane that controls target selection.

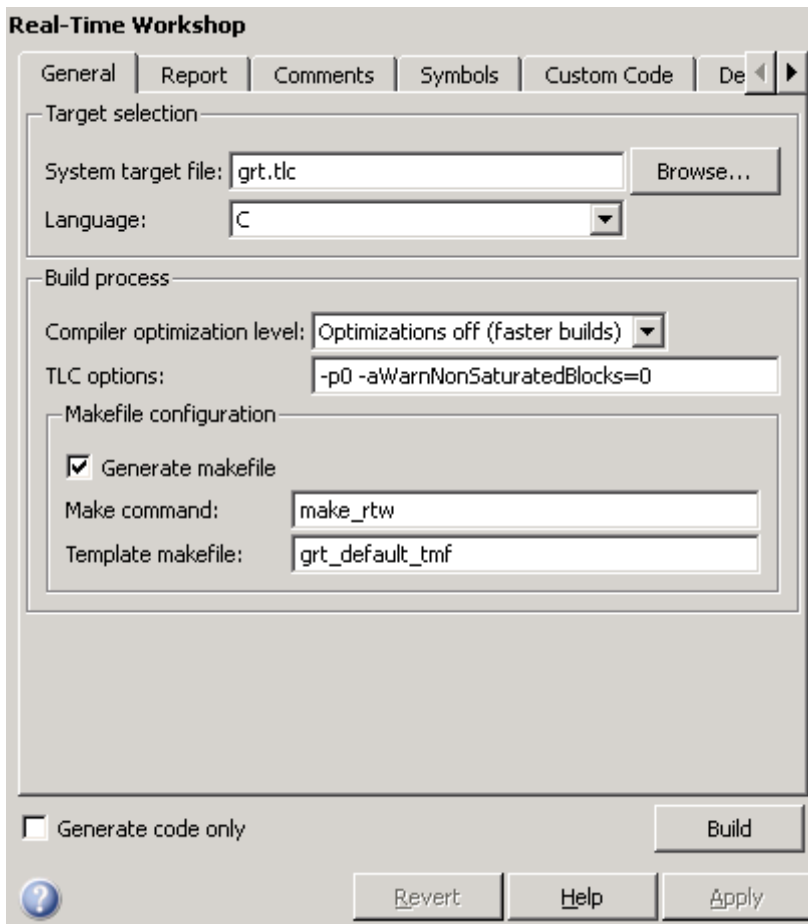
- Click the **Browse** button next to the **System target file** field. This opens the System Target File Browser, illustrated below. The browser displays a list of all currently available target configurations. Your available configurations may differ. When you select a target configuration, the Real-Time Workshop software automatically chooses the appropriate system target file, template makefile, and make command. Their names appear at the bottom left of the window.

Note The system target file browser lists all system target files found on the MATLAB path. Using some of these might require additional licensed products, such as the Real-Time Workshop® Embedded Coder™ product.

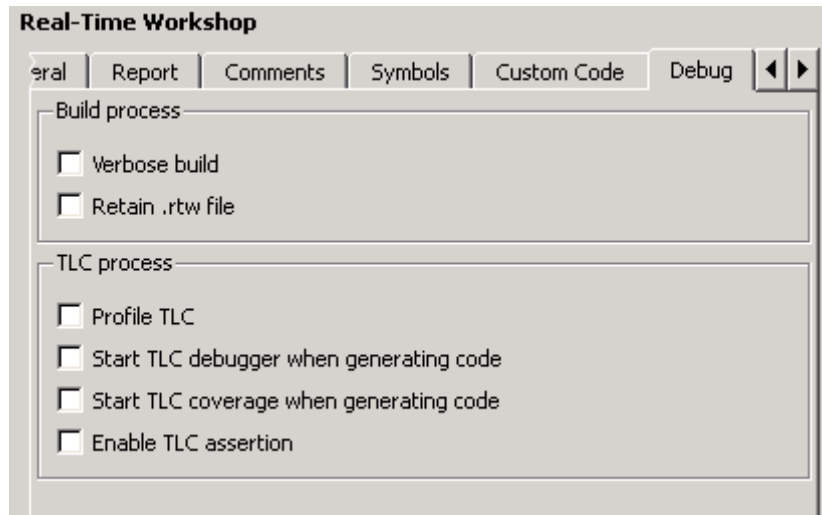


- 7 From the list of available configurations, select Generic Real-Time Target (as shown above) and then click **OK**.

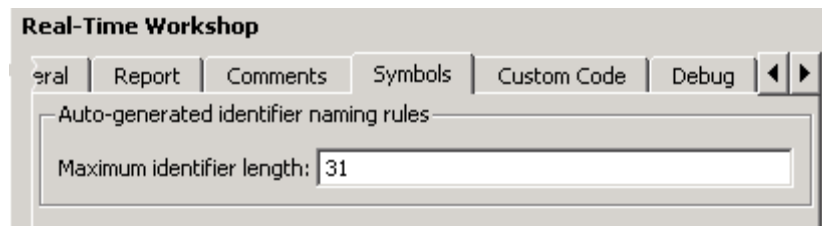
The **Real-Time Workshop** pane displays the correct system target file (grt.tlc), make command (make_rtw), and template makefile (grt_default_tmf), as shown below:



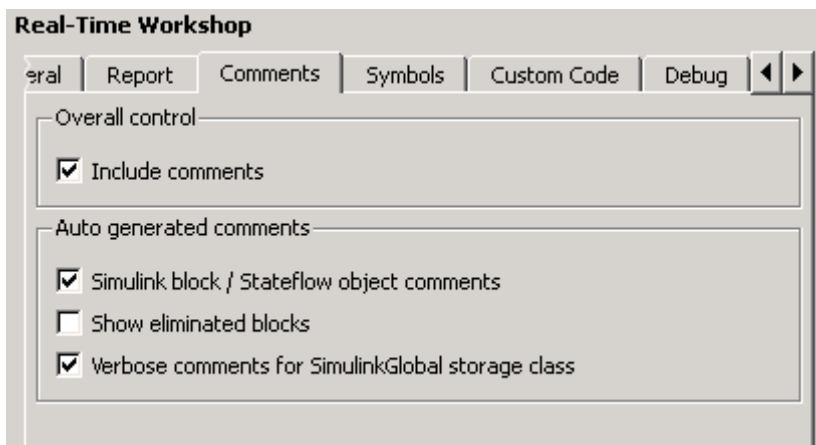
- 8 Select the **Debug** tab of the **Real-Time Workshop** pane. The options displayed here control build verbosity and debugging support, and are common to all target configurations. Make sure that all options are set to their defaults, as shown below.



- 9 Select the **Symbols** tab of the **Real-Time Workshop** pane. The options on this pane control the look and feel of generated code. Only one option exists for the GRT target, **Maximum identifier length** (the number of characters allowed in variable and other symbol names). The default for this option is 31, as shown below.



- 10** Select the **Comments** tab of the **Real-Time Workshop** pane. The options displayed here control the types of comments included in generated code. Make sure that all options are set to their defaults, as shown below.



- 11** Make sure that the **Generate code only** check box at the bottom of the pane is cleared.
- 12** Save the model.

Building and Running the Program

The Real-Time Workshop build process generates C code from the model, and then compiles and links the generated program to create an executable image. To build and run the program,

- 1 In the **Real-Time Workshop** pane, select the **General** tab, then click the **Build** button to start the build process.

A number of messages concerning code generation and compilation appear in the MATLAB Command Window. The initial messages are

```
### Starting Real-Time Workshop build procedure for model:  
f14rtw  
### Generating code into build directory: f14rtw_grt_rtw
```

A code generation report is displayed after the code is generated because the **Create code generation report** and **Launch report automatically** options in the **Real-Time Workshop Report** tab are selected.

The contents of many of the succeeding messages depends on your compiler and operating system. The final message is

```
### Successful completion of Real-Time Workshop build procedure  
for model: f14rtw
```

The working directory now contains an executable, `f14rtw.exe` (Microsoft® Windows® platforms) or `f14rtw` (UNIX® platforms). In addition, the Real-Time Workshop build process has created a project directory, `slprj`, a build directory, `f14rtw_grt_rtw`, and a report file directory, `html`, in your working directory.

- 2 To observe the contents of the working directory after the build, type the `dir` command from the Command Window.

```
dir  
.  
..
```

	f14rtw.exe	f14rtw_grt_rtw
	f14rtw.mdl	slprj

3 To run the executable from the Command Window, type

```
!f14rtw
```

The ! character passes the command that follows it to the operating system, which runs the stand-alone f14rtw program.

The program produces one line of output in the Command Window:

```
**starting the model**
```

No data is output.

4 Finally, to see the files created in the build directory, type

```
dir f14rtw_grt_rtw
```

Contents of the Build Directory

The build process creates a build directory and names it model_target_rtw, concatenating the name of the source model and the chosen target. In this example, the build directory is named f14rtw_grt_rtw.

The build directory includes these generated files (not in this order):

File	Description
f14rtw.c	Standalone C code that implements the model
rt_nonfinite.c	Function to initialize nonfinite types (Inf, NaN, and -Inf)
f14rtw.h	An include header file containing definitions of parameters and state variables
f14rtw_types.h	Forward declarations of data types used in the code
f14rtw_private.h	Header file containing common include definitions
rt_nonfinite.h	Imported declarations for nonfinite types

File	Description
<code>rtwtypes.h</code>	Static include file for Simulink <code>simstruct</code> data types; some embedded targets tailor this file to reduce overhead, but GRT does not
<code>rtmodel.h</code>	Master header file for including generated code in the static main program (its name never changes, and it simply includes <code>f14rtw.h</code>)
<code>f14rtw.mk</code>	Makefile generated from a template for the GRT target

The build directory also contains other files used in the build process, such as the object (`.obj`) files, a batch control file (`f14rtw.bat`), and a marker file (`rtw_proj.tmw`). The build directory contains a subdirectory, `html`, containing HTML files that report on the build process and show the code that it generated.

Data Logging

In this section...

“Tutorial Overview” on page 3-16

“Data Logging During Simulation” on page 3-17

“Data Logging from Generated Code” on page 3-19

Tutorial Overview

Real-Time Workshop® MAT-file data logging facility enables a generated program to save system states, outputs, and simulation time at each model execution time step. The data is written to a MAT-file, named (by default) *model.mat*, where *model* is the name of your model. In this tutorial, data generated by the model *f14rtw.mdl* is logged to the file *f14rtw.mat*. Refer to “Building a Generic Real-Time Program” on page 3-4 for instructions on setting up *f14rtw.mdl* in a working directory if you have not done so already.

To configure data logging, click **Data Import/Export** in the center pane of the Model Explorer. The process is the same as configuring a Simulink® model to save output to the MATLAB® workspace. For each workspace return variable you define and enable, the Real-Time Workshop software defines a parallel MAT-file variable. For example, if you save simulation time to the variable *tout*, your generated program logs the same data to a variable named *rt_tout*. You can change the prefix *rt_* to a suffix (*_rt*), or eliminate it entirely. You do this by selecting **Real-Time Workshop** in the center pane of the Model Explorer, then clicking the **Interface** tab.

Note Simulink lets you log signal data from anywhere in a model via the **Log signal data** option in the Signal Properties dialog box (accessed via context menu by right-clicking signal lines). The Real-Time Workshop software does not use this method of signal logging in generated code. To log signals in generated code, you must either use the **Data Import/Export** options described below or include To File or To Workspace blocks in your model.

In this tutorial, you modify the *f14rtw* model so that the generated program saves the simulation time and system outputs to the file *f14rtw.mat*. Then

you load the data into the MATLAB workspace and plot simulation time against one of the outputs. The `f14rtw` model should be open and configured as it was at the end of the previous tutorial.

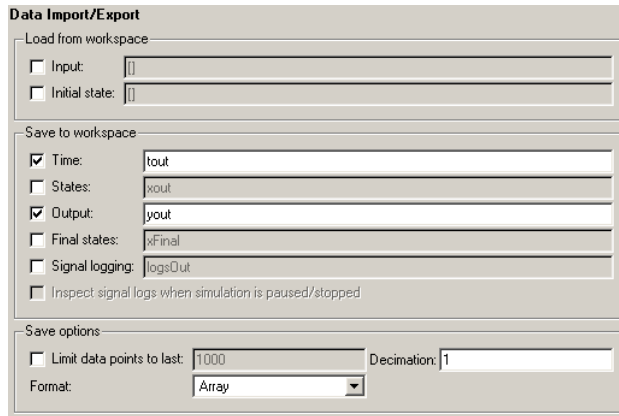
Data Logging During Simulation

To use the data logging feature:

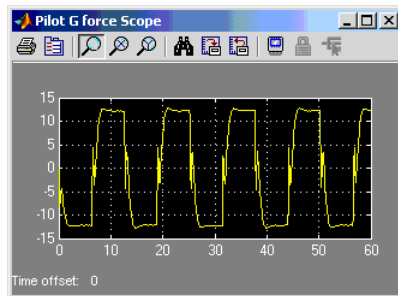
- 1 Open Model Explorer by selecting **Model Explorer** from the model's **View** menu.
- 2 In the **Model Hierarchy** pane, click the + sign preceding the model name to reveal its components.
- 3 Click **Configuration (Active)** in the left pane.
- 4 Click **Data Import/Export** in the center pane. The **Data Import/Export** pane appears at the right. Its **Save to workspace** section lets you specify which output data is to be saved to the workspace and what variable names to use for it.
- 5 Select the **Time** option. This tells Simulink to save time step data during simulation as a variable named `tout`. You can enter a different name to distinguish different simulation runs (for example using different step sizes), but take the default for this tutorial. Selecting **Time** enables the Real-Time Workshop code generator to create code that logs the simulation time to a MAT-file.
- 6 Select the **Output** option. This tells Simulink to save time step data during simulation as a variable named `yout`. Selecting **Output** enables the Real-Time Workshop code generator to create code that logs the root Output blocks (Angle of Attack and Pilot G Force) to a MAT-file.

Note The sort order of the `yout` array is based on the port number of the Output blocks, starting with 1. Angle of Attack and Pilot G Force are logged to `yout(:,1)` and `yout(:,2)`, respectively.

- 7 If any other options are enabled, clear them. Set **Decimation** to 1 and **Format** to Array. The figure below shows the dialog.



- 8 Click **Apply** to register your changes.
- 9 Save the model.
- 10 Open the Pilot G Force Scope block of the model, then run the model by choosing **Simulation > Start** in the model window. The resulting Pilot G Force scope display is shown below.



- 11** Verify that the simulation time and outputs have been saved to the MATLAB workspace in MAT-files. At the MATLAB prompt, type:

```
whos *out
```

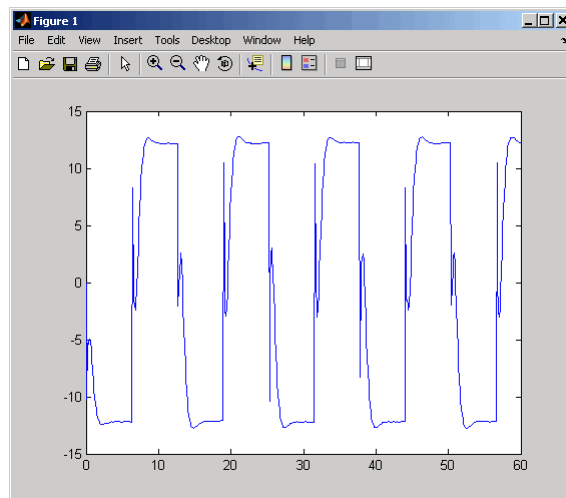
Simulink displays:

Name	Size	Bytes	Class	Attributes
tout	601x1	4808	double	
yout	601x2	9616	double	

- 12** Verify that Pilot G Force was correctly logged by plotting simulation time versus that variable. At the MATLAB prompt, type:

```
plot(tout,yout(:,2))
```

The resulting plot is shown below.



Data Logging from Generated Code

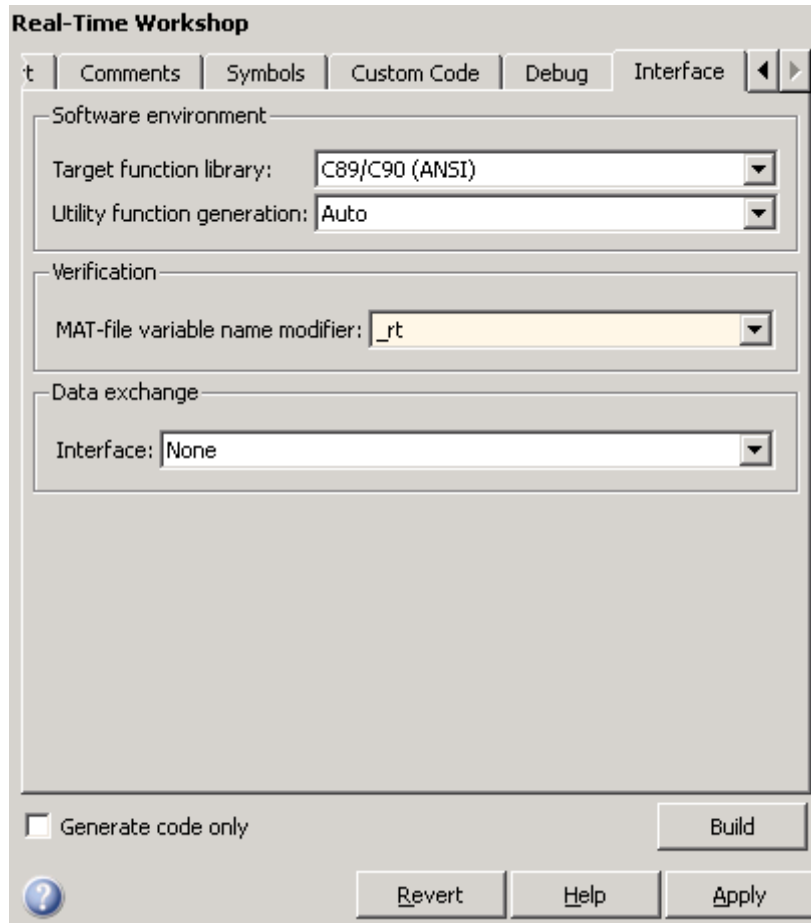
In the second part of this tutorial, you build and run a Real-Time Workshop executable of the `f14rtw` model that outputs a MAT-file containing the simulation time and outputs you previously examined. Even though you

have already generated code for the f14rtw model, you must now regenerate that code because you have changed the model by enabling data logging. The steps below explain this procedure.

To avoid overwriting workspace data with data from simulation runs, the Real-Time Workshop code generator modifies identifiers for variables logged by Simulink. You can control these modifications from the **Model Explorer**:

- 1** Open Model Explorer by selecting **Model Explorer** from the model's **View** menu.
- 2** In the **Model Hierarchy** pane, click the + sign preceding the model name to reveal its components.
- 3** Click **Configuration (Active)** in the left pane.
- 4** In the center pane, click **Real-Time Workshop**. The **Real-Time Workshop** pane appears to the right.
- 5** Click the **Interface** tab.
- 6** Set **MAT-file variable name modifier** to `_rt`. This adds the suffix `_rt` to each variable that you selected to be logged in the first part of this tutorial (tout, yout).

- 7 Clear the **Generate code only** check box, if it is currently selected. The pane should look like this:



- 8 Click **Apply** to register your changes.
- 9 Save the model.
- 10 To generate code and build an executable, click the **Build** button.
- 11 When the build concludes, run the executable with the command:

```
!f14rtw
```

- 12** The program now produces two message lines, indicating that the MAT-file has been written.

```
** starting the model **  
** created f14rtw.mat **
```

- 13** Load the MAT-file data created by the executable and look at the workspace variables from simulation and the generated program by typing:

```
load f14rtw.mat  
whos tout* yout*
```

Simulink displays:

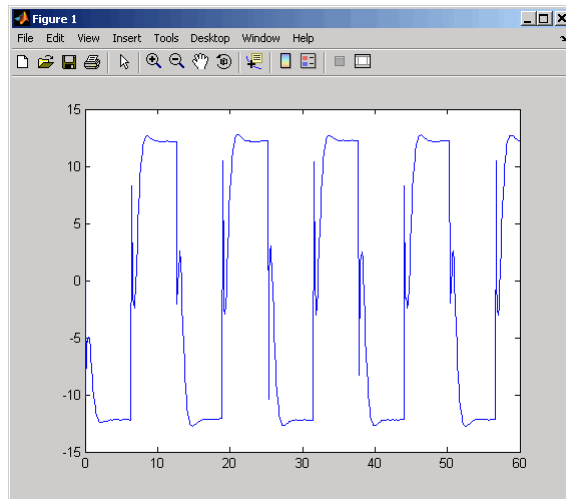
Name	Size	Bytes	Class	Attribute
tout	601x1	4808	double	
tout_rt	601x1	4808	double	
yout	601x2	9616	double	
yout_rt	601x2	9616	double	

Note that all arrays have the same number of elements.

- 14** Observe that the variables `tout_rt` (time) and `yout_rt` (Pilot G Force and Angle of Attack) have been loaded from the file. Plot Pilot G Force as a function of time.

```
plot(tout_rt,yout_rt(:,2))
```

The resulting plot is identical to the plot you produced in step 10 of the previous part of this tutorial:



Code Verification

In this section...
“Tutorial Overview” on page 3-24
“Logging Signals via Scope Blocks” on page 3-24
“Logging Simulation Data” on page 3-26
“Logging Data from the Generated Program” on page 3-26
“Comparing Numerical Results of the Simulation and the Generated Program” on page 3-28

Tutorial Overview

In this tutorial, you verify the answers computed by code generated from the `f14rtw` model. You do this by capturing two sets of output data and comparing the sets. You obtain one set by running the Simulink® model, and the other set by executing the Real-Time Workshop® generated code.

Note To obtain a valid comparison between outputs of the model and the generated program, you must use the same **Solver options** and the same **Step size** for both the Simulink run and the Real-Time Workshop build process, and the model must be configured to save simulation time, as shown in the preceding tutorial.

Logging Signals via Scope Blocks

This example uses Scope blocks (rather than Outport blocks) to log output data. The `f14rtw` model should be configured as it was at the end of the previous tutorial, “Data Logging” on page 3-16.

To configure the Scope blocks to log data,

- 1 Save the model if any unsaved changes exist.
- 2 Clear the MATLAB® workspace to eliminate the results of previous simulation runs. At the MATLAB prompt, type:


```
clear
```

The clear operation clears not only variables created during previous simulations, but all workspace variables, some of which are standard variables that the f14rtw model requires.

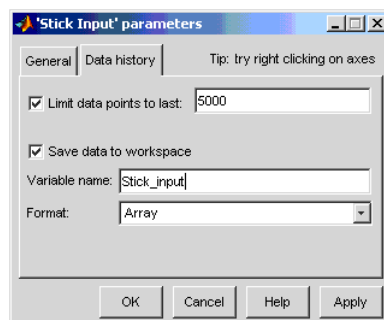
- 3 Reload the model so that the standard workspace variables are redeclared and initialized:

- a Close the model by clicking its window's **Close** box.
- b At the MATLAB prompt, type:

```
f14rtw
```

The model reopens, which declares and initializes the standard workspace variables.

- 4 Open the Stick Input Scope block and click the **Parameters** button (the second button from the left) on the toolbar of the Scope window. The Stick Input Parameters dialog box opens.
- 5 Click the **Data History** tab of the Stick Input Parameters dialog box.
- 6 Select the **Save data to workspace** option and change the **Variable name** to `Stick_input`. The dialog box appears as follows:



- 7 Click **OK**.

The Stick Input parameters now specify that the Stick Input signal to the Scope block will be logged to the array `Stick_input` during simulation.

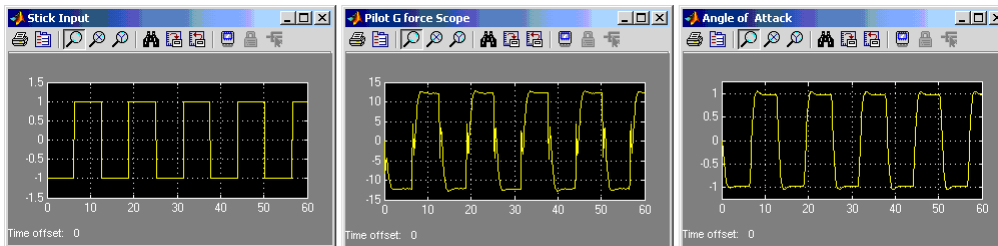
The generated code will log the same signal data to the MAT-file variable `rt_Stick_input` during a run of the executable program.

- 8 Configure the Pilot G Force and Angle of Attack Scope blocks similarly, using the variable names `Pilot_G_force` and `Angle_of_attack`.
- 9 Save the model.

Logging Simulation Data

The next step is to run the simulation and log the signal data from the Scope blocks:

- 1 Open the Stick Input, Pilot G Force, and Angle of Attack Scope blocks.
- 2 Run the model. The three Scope plots look like this:



- 3 Use the `whos` command to show that the array variables `Stick_input`, `Pilot_G_force`, and `Angle_of_attack` have been saved to the workspace.
- 4 Plot one or more of the logged variables against simulation time. For example,

```
plot(tout, Stick_input(:,2))
```

Logging Data from the Generated Program

Because you have modified the model, you must rebuild and run the `f14rtw` executable to obtain a valid data file:

- 1 Open Model Explorer by selecting **Model Explorer** from the model's **View** menu.

- 2** In the **Model Hierarchy** pane, click the + sign preceding the model name to reveal its components.
- 3** Click **Configuration (Active)** in the left pane.
- 4** Select **Real-Time Workshop** on the center pane of the **Model Explorer**, and click the **Interface** tab. The **Interface** pane appears.
- 5** Set the **MAT-file variable name modifier** menu to `rt_`. This prefixes `rt_` to each variable that you selected to be logged in the first part of this tutorial.
- 6** Click **Apply**.
- 7** Save the model.
- 8** Generate code and build an executable by clicking the **Build** button. Status messages in the MATLAB Command Window track the build process.
- 9** When the build finishes, run the stand-alone program from MATLAB.

```
!f14rtw
```

The executing program writes the following messages to the MATLAB Command Window.

```
** starting the model **
** created f14rtw.mat **
```

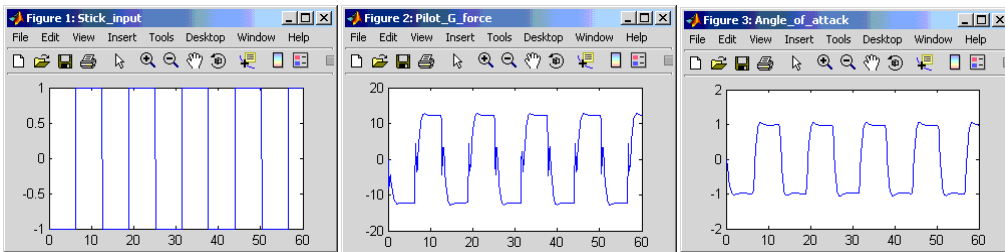
- 10** Load the data file `f14rtw.mat` and observe the workspace variables.

```
>> load f14rtw
>> whos rt*
Name                               Size          Bytes  Class    Attributes

rt_Angle_of_attack                 601x2          9616  double
rt_Pilot_G_force                   601x2          9616  double
rt_Stick_input                     601x2          9616  double
rt_tout                            601x1          4808  double
rt_yout                             601x2          9616  double
```

- 11 Use MATLAB to plot three workspace variables created by the executing program as a function of time.

```
figure('Name','Stick_input')
plot(rt_tout,rt_Stick_input(:,2))
figure('Name','Pilot_G_force')
plot(rt_tout,rt_Pilot_G_force(:,2))
figure('Name','Angle_of_attack')
plot(rt_tout,rt_Angle_of_attack(:,2))
```



Your Simulink simulations and the generated code have apparently produced nearly identical output. The next section shows how to quantify this similarity.

Comparing Numerical Results of the Simulation and the Generated Program

You have now obtained data from a Simulink run of the model and from a run of the program generated from the model. It is a simple matter to compare the `f14rtw` model output to the Real-Time Workshop results. Your comparison results may differ from those shown below.

To compare `Angle_of_attack` (simulation output) to `rt_Angle_of_attack` (generated program output), type:

```
max(abs(rt_Angle_of_attack-Angle_of_attack))
```

MATLAB prints:

```
ans =
1.0e-015 *
0    0.3331
```

Similarly, the comparison of `Pilot_G_force` (simulation output) to `rt_Pilot_G_force` (generated program output) is:

```
max(abs(rt_Pilot_G_force-Pilot_G_force))
1.0e-013 *
0      0.4974
```

Overall agreement is within 10^{-13} . The means of residuals are an order of magnitude smaller. This slight error can be caused by many factors, including

- Different compiler optimizations
- Statement ordering
- Runtime libraries

For example, a function call such as `sin(2.0)` might return a slightly different value depending on which C library you are using. Such variations can also cause differences between your results and those shown above.

First Look at Generated Code

In this section...

“Tutorial Overview” on page 3-30

“Setting Up the Model” on page 3-30

“Generating Code Without Buffer Optimization” on page 3-32

“Generating Code with Buffer Optimization” on page 3-34

“Further Optimization: Expression Folding” on page 3-36

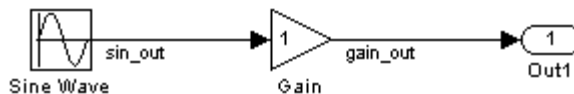
“HTML Code Generation Reports” on page 3-38

Tutorial Overview

In this tutorial, you examine code generated from a simple model to observe the effects of some of the many Real-Time Workshop® code optimization features.

Note You can view the code generated from this example using the MATLAB® editor. You can also view the code in the MATLAB Help browser if you enable the **Create HTML report** option before generating code. See the following section, “HTML Code Generation Reports” on page 3-38, for an introduction to using the HTML report feature.

The source model, `example.mdl`, is shown below.



Setting Up the Model

First, create the model from Simulink® library blocks, and set up basic Simulink and Real-Time Workshop parameters as follows:

- 1 Create a directory, `example_codegen`, and make it your working directory:

```
!mkdir example_codegen
cd example_codegen
```

- 2 Create a new model and save it as `example.mdl`.
- 3 Add Sine Wave, Gain, and Out1 blocks to your model and connect them as shown in the preceding diagram. Label the signals as shown.
- 4 Open Model Explorer by selecting **Model Explorer** from the model's **View** menu.
- 5 In the **Model Hierarchy** pane, click the + sign preceding the model name to reveal its components.
- 6 Click **Configuration (Active)** in the left pane.
- 7 Select **Solver** in the center pane. The **Solver** pane appears at the right.
- 8 In the **Solver Options** pane:
 - a Select `Fixed-step` in the **Type** field.
 - b Select `discrete (no continuous states)` in the **Solver** field.
 - c Specify `0.1` in the **Fixed-step size** field. (Otherwise, the Real-Time Workshop code generator posts a warning and supplies a default value when you generate code.)
- 9 Click **Apply**.
- 10 Click **Data Import/Export** in the center pane and make sure all check boxes in the right pane are cleared. Click **Apply** if you made any changes.
- 11 Select **Real-Time Workshop** in the center pane. Under **Target Selection** in the right pane, select the default generic real-time (GRT) target `grt.tlc`.
- 12 Select **Generate code only** at the bottom of the right pane. This option causes the Real-Time Workshop software to generate code and a make file, then stop at that point, rather than proceeding to invoke `make` to compile and link the code. Note that the label on the **Build** button changes to **Generate code**.

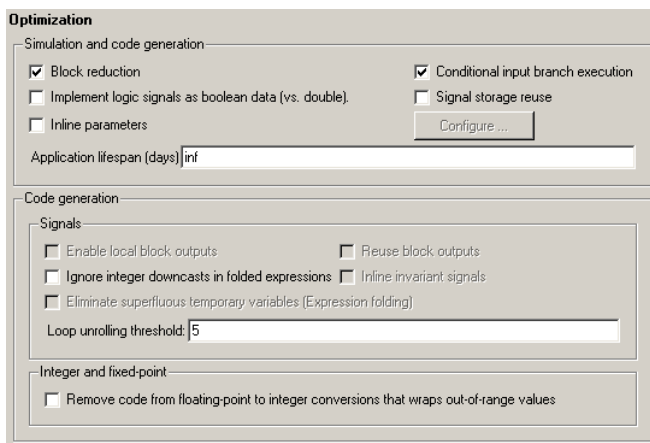
13 Click **Apply**.

14 Save the model.

Generating Code Without Buffer Optimization

When the block I/O optimization feature is enabled, the Real-Time Workshop software uses local storage for block outputs wherever possible. In this tutorial, you disable this option to see what the nonoptimized generated code looks like:

- 1** Select **Optimization** in the center pane. The **Optimization** pane appears at the right. Clear the **Signal storage reuse** option, as shown below. Change any other attributes as needed to match the figure.



2 Click **Apply**.

3 Select **Real-Time Workshop** in the center pane, and click **Generate code** on the right.

4 Because you selected the **Generate code only** option, the Real-Time Workshop build process does not invoke your make utility. The code generation process ends with this message:

```
### Successful completion of Real-Time Workshop  
build procedure for model: example
```


- 5 The generated code is in the build directory, `example_grt_rtw`. The file `example_grt_rtw/example.c` contains the output computation for the model. Open this file in the MATLAB editor.
- 6 In `example.c`, find the function `example_output` near the top of the file.

The generated C code consists of procedures that implement the algorithms defined by your Simulink block diagram. The execution engine calls the procedures in proper succession as time moves forward. The modules that implement the execution engine and other capabilities are referred to collectively as the run-time interface modules. See *Real-Time Workshop User's Guide* for a complete discussion of how the Real-Time Workshop software interfaces and executes application, system-dependent, and system-independent modules, in each of the two styles of generated code.

In code generated for `example`, the generated `example_output` function implements the actual algorithm for multiplying a sine wave by a gain. The `example_output` function computes the model's block outputs. The run-time interface must call `example_output` at every time step. With buffer optimizations turned off, `example_output` assigns unique buffers to each block output. These buffers (`rtB.sin_out`, `rtB.gain_out`) are members of a global block I/O data structure, called in this code `example_B` and declared as follows:

```
/* Block signals (auto storage) */
BlockIO_example example_B;
```

The data type `BlockIO_example` is defined in `example.h` as follows:

```
/* Block signals (auto storage) */
typedef struct {
    real_T sin_out;           /* '<Root>/Sine Wave' */
    real_T gain_out;         /* '<Root>/Gain' */
} BlockIO_example;
```

The output code accesses fields of this global structure, as shown below:

```
/* Model output function */
static void example_output(int_T tid)
{
    /* Sin: '<Root>/Sine Wave' */
    example_B.sin_out = sin(example_M->Timing.t[0] * example_P.SineWave_Freq +
        example_P.SineWave_Phase) * example_P.SineWave_Amp + example_P.SineWave_Bias;

    /* Gain: '<Root>/Gain' */
    example_B.gain_out = example_B.sin_out * example_P.Gain_Gain;

    /* Output: '<Root>/Out1' */
    example_Y.Out1 = example_B.gain_out;
    UNUSED_PARAMETER(tid);
}
```

7 In GRT targets such as this, the function `example_output` is called by a wrapper function, `MdlOutputs`. In `example.c`, find the function `MdlOutputs` near the end. It looks like this:

```
void MdlOutputs(int_T tid)
{
    example_output(tid);
}
```

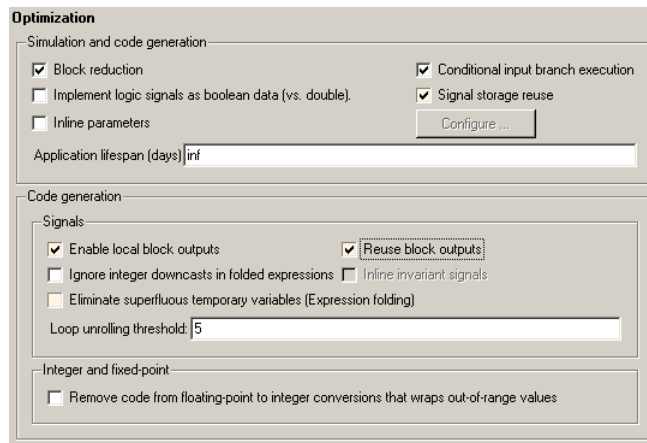
Note In previous releases, `MdlOutputs` was the actual output function for code generated by all GRT-configured models. It is now implemented as a wrapper function to provide greater compatibility among different target configurations.

In the steps below, you turn buffer optimizations on and observe how these optimizations improve the code.

Generating Code with Buffer Optimization

Enable signal buffer optimizations and regenerate the code as follows:

- 1 Change your current working directory back to `example_codegen` if you have not already done so.
- 2 Select **Optimization** in the center pane. The **Optimization** pane appears at the right. Select the **Signal storage reuse** option.
- 3 Note that three controls become enabled in the **Code generation** section: **Enable local block outputs**, **Reuse block outputs**, and **Eliminate superfluous temporary variables (Expression folding)**. Make sure that the first two options are selected, and **Eliminate superfluous temporary variables (Expression folding)** is not selected, as shown below.



You will observe the effects of expression folding later in this tutorial. Not performing expression folding allows you to see the effects of the block output optimizations.

- 4 Click **Apply** to apply the new settings.
- 5 Select **Real-Time Workshop** in the center pane, and click **Generate code** on the right.

As before, the Real-Time Workshop software generates code in the `example_grt_rtw` directory. The previously generated code is overwritten.

- 6 Edit `example_grt_rtw/example.c` and examine the function `example_output`.

With buffer optimizations enabled, the code in `example_output` reuses temporary buffers with local scope, `rtb_sin_out` and `rtb_gain_out`, rather than assigning global buffers to each input and output.

```
/* Model output function */
static void example_output(int_T tid)
{
    /* local block i/o variables */
    real_T rtb_sin_out;

    /* Sin: '<Root>/Sine Wave' */
    rtb_sin_out = sin(example_M->Timing.t[0] * example_P.SineWave_Freq +
                     example_P.SineWave_Phase) * example_P.SineWave_Amp +
                 example_P.SineWave_Bias;

    /* Gain: '<Root>/Gain' */
    rtb_sin_out *= example_P.Gain_Gain;

    /* Outport: '<Root>/Out1' */
    example_Y.Out1 = rtb_sin_out;
    UNUSED_PARAMETER(tid);
}
```

This code is more efficient in terms of memory usage. The efficiency improvement gained by enabling **Enable local block outputs** and **Reuse block outputs** would be more significant in a large model with many signals.

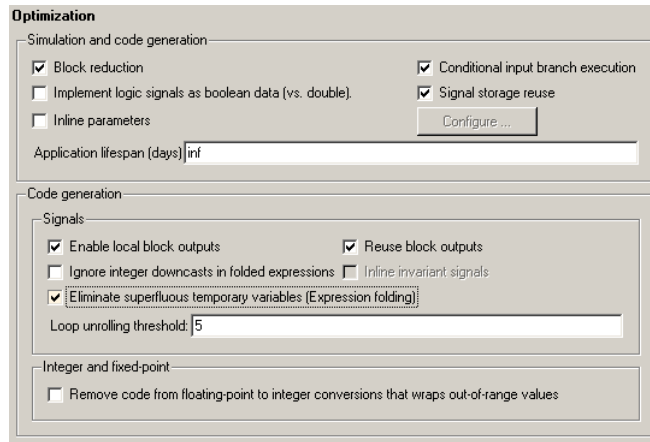
Further Optimization: Expression Folding

As a final optimization, you turn on expression folding, a code optimization technique that minimizes the computation of intermediate results and the use of temporary buffers or variables.

Enable expression folding and regenerate the code as follows:

- 1 Change your current working directory back to `example_codegen` if you have not already done so.

- 2 Select **Optimization** in the center pane. The **Optimization** pane appears.
- 3 Select the **Eliminate superfluous temporary variables (Expression folding)** option.



- 4 Click **Apply**.
- 5 Select **Real-Time Workshop** in the center pane, and click **Generate code** on the right.

The Real-Time Workshop software generates code as before.

- 6 Edit `example_grt_rtw/example.c` and examine the function `example_output`.

In the previous examples, the Gain block computation was computed in a separate code statement and the result was stored in a temporary location before the final output computation.

With **Eliminate superfluous temporary variables (Expression folding)** selected, there is a subtle but significant difference in the generated code: the gain computation is incorporated (or folded) directly into the Output computation, eliminating the temporary location and separate code statement. This computation is on the last line of the `example_output` function.

```
/* Model output function */
```

```
static void example_output(int_T tid)
{
    /* Outport: '<Root>/Out1' incorporates:
     * Gain: '<Root>/Gain'
     * Sin: '<Root>/Sine Wave'
     */
    example_Y.Out1 = (sin(example_M->Timing.t[0] * example_P.SineWave_Freq +
                        example_P.SineWave_Phase) * example_P.SineWave_Amp +
                    example_P.SineWave_Bias) * example_P.Gain_Gain;
    UNUSED_PARAMETER(tid);
}
```

In many cases, expression folding can incorporate entire model computations into a single, highly optimized line of code. Expression folding is turned on by default. Using this option will improve the efficiency of generated code.

HTML Code Generation Reports

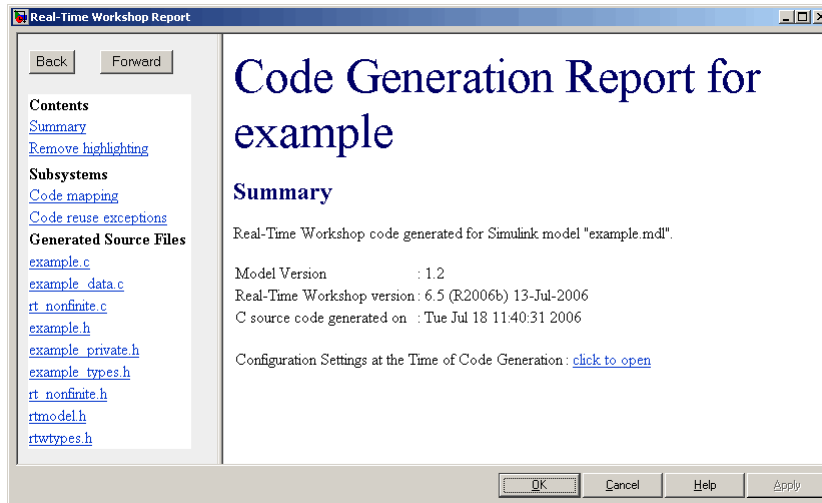
When the **Create code generation report** check box on the **Real-Time Workshop > Report** pane is selected, a navigable summary of source files is produced when the model is built. See the figure below.

Selecting this option causes the Real-Time Workshop software to produce an HTML file for each generated source file, plus a summary and an index file, in a directory named `html` within the build directory. If the **Launch report automatically** option (which is enabled by selecting **Create code generation report**) is also selected, the HTML summary and index are automatically displayed.

In the HTML report, you can click links in the report to inspect source and include files, and view relevant documentation. In these reports,

- Global variable instances are hyperlinked to their definitions.
- Block header comments in source files are hyperlinked back to the model; clicking one of these causes the block that generated that section of code to be highlighted (this feature requires a Real-Time Workshop® Embedded Coder™ license and the ERT target).

An HTML report for the `example.mdl` GRT target is shown below.



One useful feature of HTML reports is the link on the Summary page identifying Configuration Settings at the Time of Code Generation. Clicking this opens a read-only Configuration Parameters dialog box through which you can navigate to identify the settings of every option in place at the time that the HTML report was generated.

You can refer to HTML reports at any time. To review an existing HTML report after you have closed its window, use any HTML browser to open the file `html/model_codgen_rpt.html` within your build directory.

Note The contents of HTML reports for different target types vary, and reports for models with subsystems feature additional information. You can also view HTML-formatted files and text files for generated code and model reference targets within **Model Explorer**. See “Generating Code for a Referenced Model” on page 3-55 for more information.

For further information on configuring and optimizing generated code, consult these sections of the Real-Time Workshop User’s Guide documentation:

- “Code Generation and the Build Process” contains overviews of controlling optimizations and other code generation options.
- “Optimizing a Model for Code Generation” has additional details on signal reuse, expression folding, and other code optimization techniques.
- “Program Architecture” has details on the structure and execution of *model.c* files.

Working with External Mode Using GRT

In this section...
“Tutorial Overview” on page 3-41
“Setting Up the Model” on page 3-42
“Building the Target Executable” on page 3-44
“Running the External Mode Target Program” on page 3-47
“Tuning Parameters” on page 3-53

Tutorial Overview

This section provides step-by-step instructions for getting started with external mode, a very useful environment for rapid prototyping. The tutorial consists of four parts, each of which depends on completion of the preceding ones, in order. The four parts correspond to the steps that you follow in simulating, building, and tuning an actual real-time application:

- 1 Set up the model.
- 2 Build the target executable.
- 3 Run the external mode target program.
- 4 Tune parameters.

The example presented uses the generic real-time target, and does not require any hardware other than the computer on which you run the Simulink® and Real-Time Workshop® software. The generated executable in this example runs on the host computer in a separate process from MATLAB® and Simulink.

The procedures for building, running, and testing your programs are almost identical in UNIX® and PC environments. The discussion notes differences where applicable.

For a more thorough description of external mode, including a discussion of all the options available, see “Using the External Mode User Interface” in the Real-Time Workshop documentation.

Setting Up the Model

In this part of the tutorial, you create a simple model, `extmode_example`, and a directory called `ext_mode_example` to store the model and the generated executable:

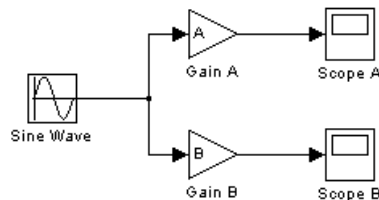
- 1 Create the directory from the MATLAB command line by typing

```
mkdir ext_mode_example
```

- 2 Make `ext_mode_example` your working directory:

```
cd ext_mode_example
```

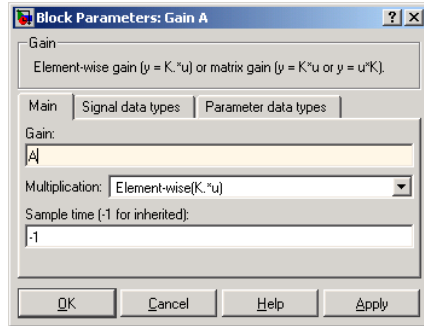
- 3 Create a model in Simulink with a Sine Wave block for the input signal, two Gain blocks in parallel, and two Scope blocks. The model is shown below. Be sure to label the Gain and Scope blocks as shown, so that subsequent steps will be clear to you.



- 4 Define and assign two variables A and B in the MATLAB workspace as follows:

```
A = 2; B = 3;
```

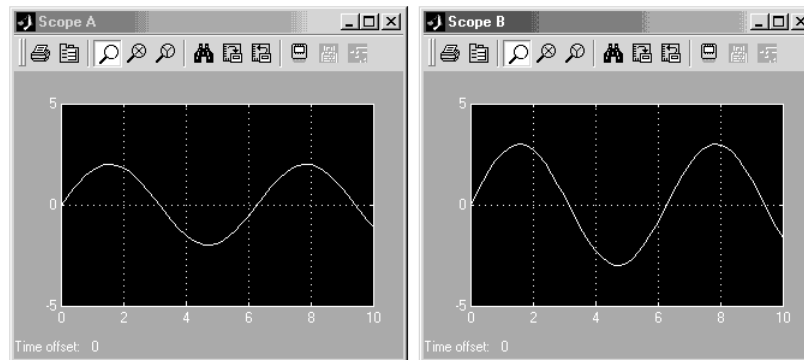
- 5 Open Gain block A and set its **Gain** parameter to the variable A.



- 6 Similarly, open Gain block B and set its **Gain** parameter to the variable B.

When the target program is built and connected to Simulink in external mode, you can download new gain values to the executing target program by assigning new values to workspace variables A and B, or by editing the values in the block parameters dialog. You explore this in “Tuning Parameters” on page 3-53.

- 7 Verify correct operation of the model. Open the Scope blocks and run the model. When $A = 2$ and $B = 3$, the output looks like this.



- 8 From the **File** menu, choose **Save As**. Save the model as `extmode_example.mdl`.

Building the Target Executable

In this section, you set up the model and code generation parameters required for an external mode compatible target program. Then you generate code and build the target executable:

- 1 Open Model Explorer by selecting **Model Explorer** from the model's **View** menu.
- 2 In the **Model Hierarchy** pane, click the + sign preceding the model name to reveal its components.
- 3 Click **Configuration (Active)** in the left pane.
- 4 Select **Solver** in the center pane. The **Solver** pane appears at the right.
- 5 In the **Solver Options** pane:
 - a Select Fixed-step in the **Type** field.
 - b Select discrete (no continuous states) in the **Solver** field.
 - c Specify 0.1 in the **Fixed-step size** field. (Otherwise, the Real-Time Workshop build process posts a warning and supplies a value when you generate code.)

- 6 Click **Apply**. The dialog box appears below. Note that after you click **Apply**, the controls you changed again have a white background color.

Solver

Simulation time

Start time: 0.0 Stop time: 60

Solver options

Type: Fixed-step Solver: discrete (no continuous states)

Fixed-step size (fundamental sample time): 0.1

Tasking and sample time options

Periodic sample time constraint: Unconstrained

Tasking mode for periodic sample times: Auto

Automatically handle rate transition for data transfer

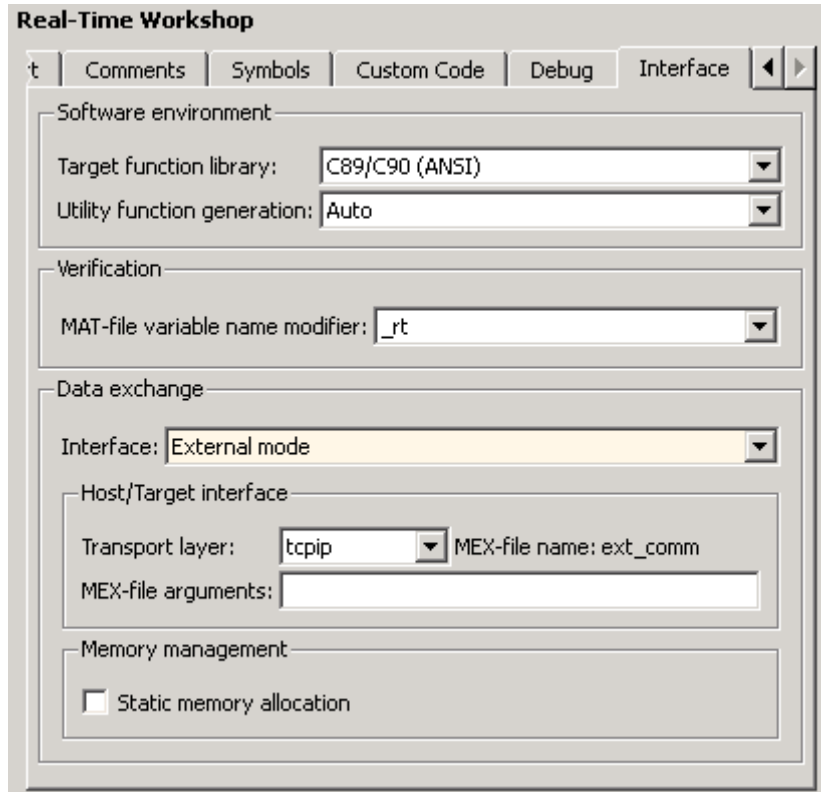
Deterministic data transfer: Whenever possible

Higher priority value indicates higher task priority

- 7 Click **Data Import/Export** in the center pane, and clear the **Time** and **Output** check boxes. In this tutorial, data is not logged to the workspace or to a MAT-file. Click **Apply**.
- 8 Click **Optimization** in the center pane. Make sure that the **Inline parameters** option is *not* selected. Although external mode supports inlined parameters, you will not explore them in this tutorial. Click **Apply** if you have made any changes.
- 9 Click **Real-Time Workshop** in the center pane. By default, the generic real-time (GRT) target is selected on the **Real-Time Workshop** pane. Select the **Interface** tab. The **Interface** pane appears at the right.
- 10 In the **Interface** pane, select External mode from the **Interface** pull-down menu in the **Data exchange** section. This enables generation of external

mode support code and reveals two more sections of controls: **Host/Target interface** and **Memory management**.

- 11 Set the **Transport layer** pull-down menu in the **Host/Target interface** section to `tcpip`. The pane now looks like this:



External mode supports communication via TCP/IP, serial, and custom transport protocols. The **MEX-file name** field specifies the name of a MEX-file that implements host and target communications on the host side. The default for TCP/IP is `ext_comm`, a MEX-file provided with the Real-Time Workshop software. You can override this default by supplying appropriate files. See “Creating an External Mode Communication Channel” in the Real-Time Workshop documentation for details if you need to support other transport layers.

The **MEX-file arguments** field lets you specify arguments, such as a TCP/IP server port number, to be passed to the external interface program. Note that these arguments are specific to the external interface you are using. For information on setting these arguments, see “MEX-File Optional Arguments for TCP/IP Transport” and “MEX-File Optional Arguments for Serial Transport” in the Real-Time Workshop documentation.

This tutorial uses the default arguments. Leave the **MEX-file arguments** field blank.

12 Click **Apply** to save the **Interface** settings.

13 Save the model.

14 Click **Real-Time Workshop** in the center pane of the **Model Explorer**. On the right, make sure that **Generate code only** is cleared, then click the **Build** button to generate code and create the target program. The content of subsequent messages depends on your compiler and operating system. The final message is

```
### Successful completion of Real-Time Workshop  
build procedure for model: extmode_example
```

In the next section, you will run the `extmode_example` executable and use Simulink as an interactive front end to the running target program.

Running the External Mode Target Program

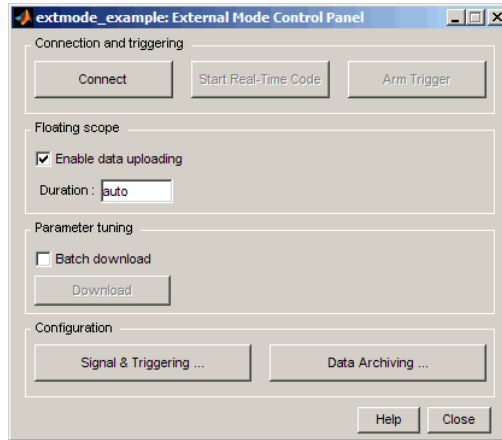
The target executable, `extmode_example`, is now in your working directory. In this section, you run the target program and establish communication between Simulink and the target.

Note An external-mode program like `extmode_example` is a host-based executable. Its execution is not tied to RTOS or a periodic timer interrupt, and it does not run in real time. The program just runs as fast as possible, and the time units it counts off are simulated time units that do not correspond to time in the world outside the program.

The External Signal & Triggering dialog box (accessed via the **External Mode Control Panel**) displays a list of all the blocks in your model that support external mode signal monitoring and logging. The dialog box also lets you configure the signals that are viewed and how they are acquired and displayed. You can use it to reconfigure signals while the target program runs.

In this tutorial, you observe and use the default settings of the External Signal & Triggering dialog box.

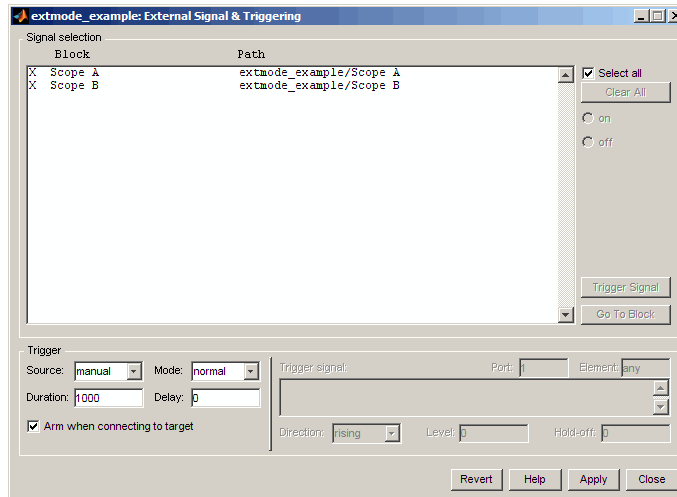
- 1 From the **Tools** menu of the block diagram, select **External Mode Control Panel**, which lets you configure signal monitoring and data archiving. It also lets you connect to the target program and start and stop execution of the model code.



The top three buttons are for use after the target program has started. The two lower buttons open separate dialog boxes:

- The **Signal & triggering** button opens the **External Signal & Triggering** dialog box. This dialog box lets you select the signals that are collected from the target system and viewed in external mode. It also lets you select a signal that triggers uploading of data when certain signal conditions are met, and define the triggering conditions.
- The **Data archiving** button opens the **External Data Archiving** dialog box. Data archiving lets you save data sets generated by the target program for future analysis. This example does not use data archiving. See “Data Archiving” in the Real-Time Workshop documentation for more information.

- 2** In the **External Mode Control Panel**, click the **Signal & Triggering** button. The **External Signal & Triggering** dialog box opens. The default configuration of the **External Signal & Triggering** dialog box is designed to ensure that all signals are selected for monitoring. The default configuration also ensures that signal monitoring will begin as soon as the host and target programs have connected. The figure below shows the default configuration for `extmode_example`.



- 3** Make sure that the **External Signal & Triggering** dialog box is set to the defaults as shown:
- **Select all** check box is selected. All signals in the **Signal selection** list are marked with an X in the **Block** column.
 - **Trigger Source:** manual
 - **Trigger Mode:** normal
 - **Duration:** 1000
 - **Delay:** 0
 - **Arm when connecting to target:** selected

Click **Close**, and then close the **External Mode Control Panel**.

For information on the options mentioned above, see “External Signal Uploading and Triggering” in the Real-Time Workshop documentation.

- 4** To run the target program, you must open a command prompt window (on UNIX systems, an Xterm window). At the command prompt, change to the `ext_mode_example` directory that you created in step 1. The target program is in this directory.

```
cd ext_mode_example
```

Next, type the following command:

```
extmode_example -tf inf -w
```

and press **Return**.

Note On Microsoft® Windows® platforms, you can also use the “bang” command (!) in the MATLAB Command Window (note that the trailing ampersand is required): `!extmode_example -tf inf -w &`

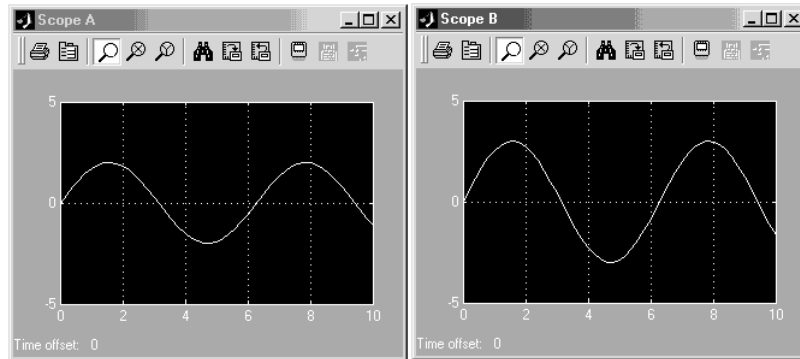
The target program begins execution. Note that the target program is in a wait state, so no activity occurs in the MATLAB Command Window.

The `-tf` switch overrides the stop time set for the model in Simulink. The `inf` value directs the model to run indefinitely. The model code runs until the target program receives a stop message from Simulink.

The `-w` switch instructs the target program to enter a wait state until it receives a **Start real-time code** message from the host. This switch is required if you want to view data from time step 0 of the target program execution, or if you want to modify parameters before the target program begins execution of model code.

- 5 Open Scope blocks A and B. At this point, no signals are visible on the scopes. When you connect Simulink to the target program and begin model execution, the signals generated by the target program will be visible on the scope displays.
- 6 The model itself must be in external mode before communication between the model and the target program can begin. To enable external mode, select **External** from the simulation mode pull-down menu located on the right side of the toolbar of the Simulink window. Alternatively, you can select **External** from the **Simulation** menu.
- 7 Reopen the **External Mode Control Panel** (found in the **Tools** menu) and click **Connect**. This initiates a handshake between Simulink and the target program. When Simulink and the target are connected, the **Start Real-Time Code** button becomes enabled, and the label of the **Connect** button changes to **Disconnect**.

- 8** Click the **Start Real-Time Code** button. The outputs of Gain blocks A and B are displayed on the two scopes in your model. With $A = 2$ and $B = 3$, the output looks like this:



Having established communication between Simulink and the running target program, you can tune block parameters in Simulink and observe the effects the parameter changes have on the target program. You do this in the next section.

Tuning Parameters

You can change the gain factor of either Gain block by assigning a new value to the variable A or B in the MATLAB workspace. When you change block parameter values in the workspace during a simulation, you must explicitly update the block diagram with these changes. When the block diagram is updated, the new values are downloaded to the target program.

To tune the variables A and B,

- 1** In the MATLAB Command Window, assign new values to both variables, for example:

```
A = 0.5; B = 3.5;
```

- 2** Activate the `extmode_example` model window. Select **Update Diagram** from the **Edit** menu, or press **Ctrl+D**. As soon as Simulink has updated the block parameters, the new gain values are downloaded to the target program, and the effect of the gain change becomes visible on the scopes.

- 3** You can also enter gain values directly into the Gain blocks. To do this, open the Block Parameters dialog box for Gain block A or B in the model. Enter a new numerical value for the gain and click **Apply**. As soon as you click **Apply**, the new value is downloaded to the target program and the effect of the gain change becomes visible on the scope. Similarly, you can change the frequency, amplitude, or phase of the sine wave signal by opening the Block Parameters dialog box for the Sine Wave block and entering a new numerical value in the appropriate field.

Note that because the Sine Wave is a source block, Simulink pauses while the Block Parameters dialog box is open. You must close the dialog box by clicking **OK**, which allows Simulink to continue and enable you to see the effect of your changes.

Also note that you cannot change the sample time of the Sine Wave block. Block sample times are part of the structural definition of the model and are part of the generated code. Therefore, if you want to change a block sample time, you must stop the external mode simulation, reset the block's sample time, and rebuild the executable.

- 4** To simultaneously disconnect host/target communication and end execution of the target program, pull down the **Simulation** menu and select **Stop Real-Time Code**. You can also do this from the **External Mode Control Panel**.

Generating Code for a Referenced Model

In this section...

“Tutorial Overview” on page 3-55

“Creating and Configuring a Subsystem Within the vdp Model” on page 3-58

“Converting the Model to Use Model Referencing” on page 3-58

“Generating Model Reference Code for a GRT Target” on page 3-62

“Working with Project Directories” on page 3-65

Tutorial Overview

The Model block allows an existing Simulink® model to be used as a block in another model. When a model contains one or more Model blocks, it is called a *parent model*. Models represented by Model blocks are called *referenced models* in that context.

Model blocks are particularly useful for large-scale modeling applications. They work by generating code and creating a binary file for each referenced model, then executing the binary during simulation. The Real-Time Workshop® software generates code for referenced models in a slightly different way than for top models and stand-alone models, and generates different code than Simulink does when it simulates them. Follow this tutorial to learn how Simulink and the Real-Time Workshop software handle Model blocks.

In this tutorial, you create a subsystem in an existing model, convert it to a referenced model, call it from the top model via a Model block, and generate code for both models. You accomplish some of these tasks automatically with a function called `Simulink.Subsystem.convertToModelReference`. You also explore the generated code and the project directory using the Model Explorer.

Creating and Configuring a Subsystem Within the vdp Model

In the first part of this tutorial, you define a subsystem for the vdp demo model, set configuration parameters for the model, and use the `Simulink.Subsystem.convertToModelReference` function to convert it into

two new models — the top model (vdptop) and a referenced model vdpmultRM containing a subsystem you created (vdpmult):

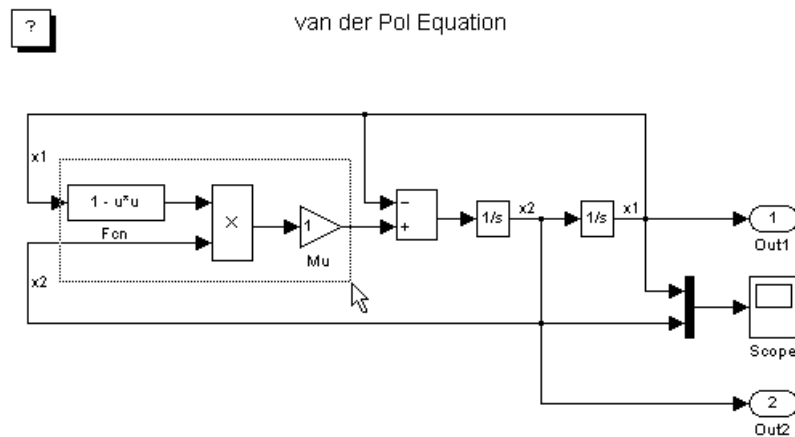
- 1 In the MATLAB® Command Window, create a new working directory wherever you want to work and cd into it:

```
mkdir tutorial6
cd tutorial6
```

- 2 Open the vdp demo model by typing:

```
vdp
```

- 3 Drag a box around the three blocks on the left to select them, as shown below:



- 4 Choose **Create Subsystem** from the model's **Edit** menu.

A subsystem block replaces the selected blocks.

- 5 If the new subsystem block is not where you want it, move it to a preferred location.
- 6 Rename the block vdpmult.

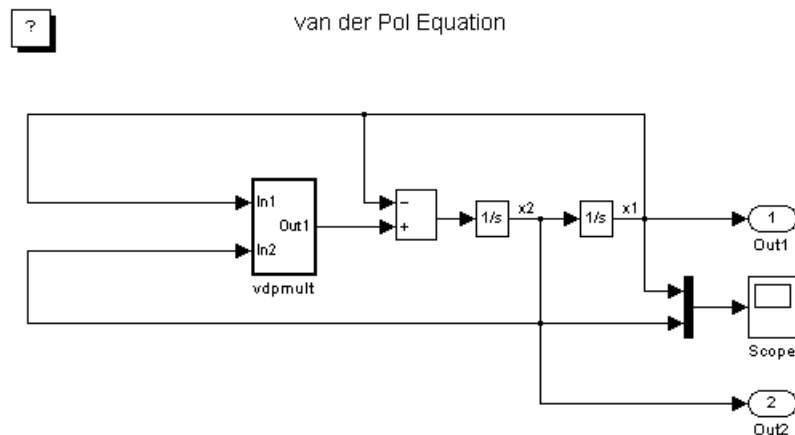
- 7 Right-click the vdpmult block and select **Subsystem Parameters**.

The **Function Block Parameters** dialog box appears.

- 8 In the **Function Block Parameters** dialog box, select **Treat as atomic unit**, then click **OK**.

The border of the vdpmult subsystem thickens to indicate that it is now atomic. An atomic subsystem executes as a unit relative to the parent model: subsystem block execution does not interleave with parent block execution. This property makes it possible to extract subsystems for use as stand-alone models and as functions in generated code.

The block diagram should now appear as follows:



You must set several properties before you can extract a subsystem for use as a referenced model. To set the necessary properties,

- 1 Open Model Explorer by selecting **Model Explorer** from the model's **View** menu.
- 2 In the **Model Hierarchy** pane, click the + sign preceding the model name to reveal its components.
- 3 Click **Configuration (Active)** in the left pane.

- 4** In the center pane, select **Solver**.
- 5** In the right pane, under **Solver Options** change the **Type** to Fixed-step, then click **Apply**. You must use fixed-step solvers when generating code, although referenced models can use different solvers than top models.
- 6** In the center pane, select **Optimization**. In the right pane, under **Simulation and code generation**, select **Inline parameters**. Click **Apply**.
- 7** In the center pane, select **Diagnostics**. In the right pane:
 - a** Select the **Data Validity** tab. In the **Signals** area, set **Signal resolution** to Explicit only.
 - b** Select the **Connectivity** tab. In the **Buses** area, set **Mux blocks used to create bus signals** to error.

- 8** Click **Apply**.

The model now has the properties that model referencing requires.

- 9** In the center pane, click **Model Referencing**. In the right pane, set **Rebuild options** to If any changes in known dependencies detected. Click **Apply**. This setting prevents unnecessary code regeneration.
- 10** In the vdp model window, choose **File > Save as**. Save the model as vdp_top in your working directory. Leave the model open.

Converting the Model to Use Model Referencing

In this portion of the tutorial, you use the conversion function `Simulink.SubSystem.convertToModelReference` to extract the subsystem `vdpmult` from `vdptop` and convert `vdpmult` into a referenced model named `vdpmultRM`. To see the complete syntax of the conversion function, type at the MATLAB prompt:

```
help Simulink.SubSystem.convertToModelReference
```

For additional information, type:

```
doc Simulink.SubSystem.convertToModelReference
```

If you want to see a demo of `Simulink.SubSystem.convertToModelReference` before using it yourself, type:

```
sldemo_mdhref_conversion
```

Simulink also provides a menu command, **Convert to Model Block**, that you can use to convert a subsystem to a referenced model. The command calls `Simulink.SubSystem.convertToModelReference` with default arguments. See “Converting a Subsystem to a Referenced Model” in the Simulink documentation.

Extracting the Subsystem to a Referenced Model

To use `Simulink.SubSystem.convertToModelReference` to extract `vdpmult` and convert it to a referenced model, type:

```
Simulink.SubSystem.convertToModelReference...
('vdptop/vdpmult', 'vdpmultRM',...
'ReplaceSubsystem', true, 'BuildTarget', 'Sim')
```

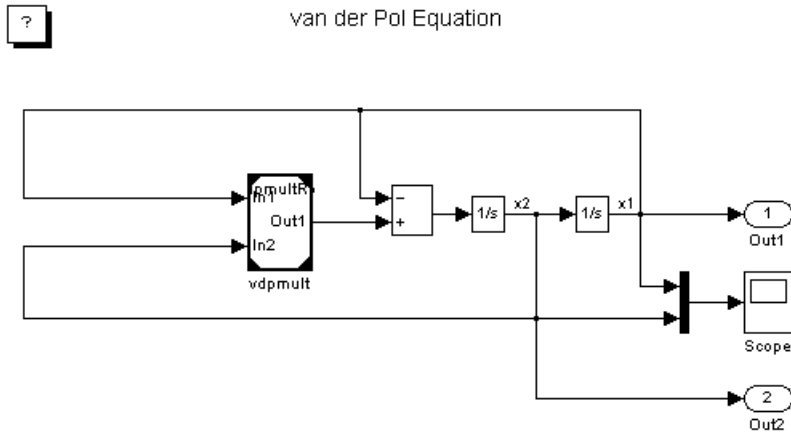
This command:

- 1** Extracts the subsystem `vdpmult` from `vdptop`.
- 2** Converts the extracted subsystem to a separate model named `vdpmultRM` and saves the model to the working directory.
- 3** In `vdptop`, replaces the extracted subsystem with a Model block that references `vdpmultRM`.
- 4** Creates a simulation target for `vdptop` and `vdpmultRM`.

The converter prints a number of progress messages, and when successful, terminates with

```
ans =
     1
```

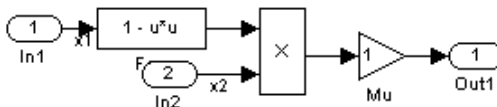
The parent model vdptop now looks like this:



Note the changes in the appearance of the block `vdpmult`. These changes indicate that it is now a Model block rather than a subsystem. As a Model block, it has no contents of its own: the previous contents now exist in the referenced model `vdpmultRM`, whose name appears at the top of the Model block. Widen the Model block as needed to expose the complete name of the referenced model.

If the parent model `vdptop` had been closed at the time of conversion, the converter would have opened it. Extracting a subsystem to a referenced model does *not* automatically create or change a saved copy of the parent model. To preserve the changes to the parent model, save `vdptop`.

Right-click the Model block `vdpmultRM` and choose **Open Model 'vdpmultRM'** to open the referenced model. The model looks like this:



Files Created and Changed by the Converter

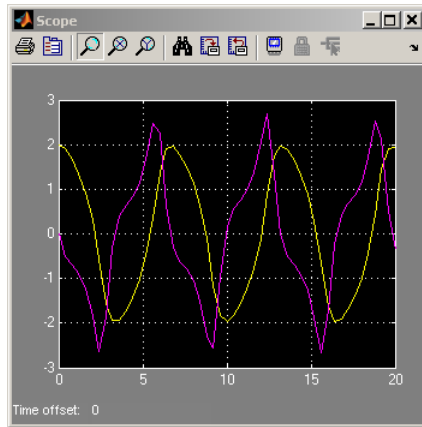
The files in your working directory now consist of the following (not in this order).

File	Description
<code>vdptop.mdl</code>	Top-level model that contains a Model block where the <code>vdpmult</code> subsystem was
<code>vdpmultRM.mdl</code>	Referenced model created for the <code>vdpmult</code> subsystem
<code>vdpmultRM_msf.mexw32</code>	Static library file (Microsoft® Windows® platforms only). The last three characters of the suffix are system-dependent and may differ. This file executes when the <code>vdptop</code> model calls the model block <code>vdpmult</code> . When called, <code>vdpmult</code> in turn calls the referenced model <code>vdpmultRM</code> .
<code>/slprj</code>	Project directory for generated model reference code

Code for model reference simulation targets is placed in the `slprj/sim` subdirectory. Generated code for GRT, ERT, and other Real-Time Workshop targets is placed in `slprj` subdirectories named for those targets. You will inspect some model reference code later in this tutorial. For more information on project directories, see “Working with Project Directories” on page 3-65.

Running the Converted Model

Open the Scope block in vdptop if it is not visible. In the vdptop window, click the **Start** tool or choose **Start** from the **Simulation** menu. The model calls the vdpmultRM_msf simulation target to simulate. The output looks like this:



Generating Model Reference Code for a GRT Target

The function `Simulink.SubSystem.convertToModelReference` created the model and the simulation target files for the referenced model `vdpmultRM`. In this part of the tutorial, you generate code for that model and the `vdptop` model, and run the executable you create:

- 1 Verify that you are still working in the `tutorial16` directory.
- 2 If the model `vdptop` is not open, open it. Make sure it is the active window.
- 3 Open Model Explorer by selecting **Model Explorer** from the model's **View** menu.
- 4 In the **Model Hierarchy** pane, click the + sign preceding the `vdptop` model to reveal its components.
- 5 Click **Configuration (Active)** in the left pane.
- 6 In the center pane, select **Data Import/Export**.

- 7** Check **Time** and **Output** in the **Save to workspace** section of the right pane, then click **Apply**. The pane shows the following information:

Data Import/Export

Load from workspace

Input: [t, u]

Initial state: xInitial

Save to workspace

Time: tout

States: xout

Output: yout

Final states: xFinal

Signal logging: logout

Inspect signal logs when simulation is paused/stopped

Save options

Limit data points to last: 1000 Decimation: 1

Format: Array

These settings instruct the model `vdptop` (and later its executable) to log time and output data to MAT-files for each time step.

- 8** Generate GRT code (the default) and an executable for the top model and the referenced model by selecting **Real-Time Workshop** in the center pane and then clicking the **Build** button.

The Real-Time Workshop build process generates and compiles code. The current directory now contains a new file and a new directory:

File	Description
<code>vdptop.exe</code>	The executable created by the Real-Time Workshop build process
<code>vdptop_grt_rtw/</code>	The Real-Time Workshop build directory, containing generated code for the top model

The Real-Time Workshop build process also generated GRT code for the referenced model, and placed it in the `s1prj` directory.

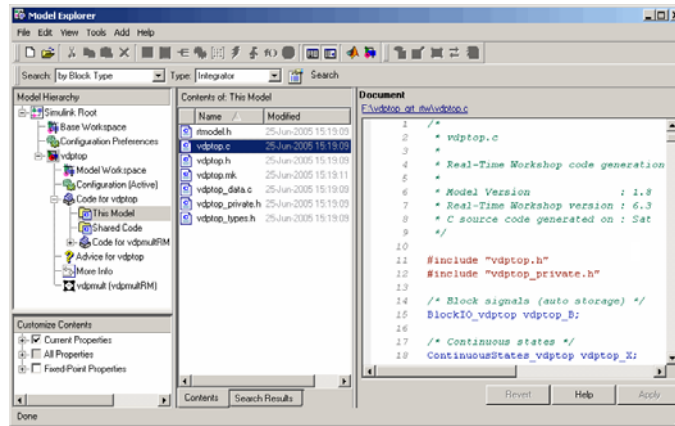
To view a model's generated code in **Model Explorer**, the model must be open. To use the **Model Explorer** to inspect the newly created build directory, `vdptop_grt_rtw`:

- 1** Open Model Explorer by selecting **Model Explorer** from the model's **View** menu.
- 2** In the **Model Hierarchy** pane, click the + sign preceding the model name to reveal its components.
- 3** Click the + sign preceding `Code` for `vdptop` to reveal its components.
- 4** Click `This Model` that appears directly under `Code` for `vdptop`.

A list of generated code files for `vdptop_converted` appears in the **Contents** pane:

```
rtmodel.h
vdptop.c
vdptop.h
vdptop.mk
vdptop_private.h
vdptop_types.h
```


You can browse code in any of these files by selecting a file of interest in the **Contents** pane. The code for the file you select appears in the pane to the right. The figure below illustrates viewing code for `vdptop.c`. Your code may differ.



To open a file in a text editor, click a filename, and then click the hyperlink that appears in the gray area at the top of the **Document** pane.

Working with Project Directories

When you view generated code in **Model Explorer**, the files listed in the **Contents** pane can exist either in a build directory or a project directory. Model reference project directories (always rooted under `slprj`), like build directories, are created in your current working directory, and this implies certain constraints on when and where model reference targets are built, and how they are accessed.

The models referenced by Model blocks can be stored anywhere. A given top model can include models stored on different file systems and directories. The same is not true for the simulation targets derived from these models; under most circumstances, all models referenced by a given top model must be set up to simulate and generate model reference target code in a single project directory. The top and referenced models can exist anywhere on your path, but the project directory is assumed to exist in your current directory.

This means that, if you reference the same model from several top models, each stored in a different directory, you must either

- Always work in the same directory and be sure that the models are on your path
- Allow separate project directories, simulation targets, and Real-Time Workshop targets to be generated in each directory in which you work

The files in such multiple project directories are generally quite redundant. Therefore, to avoid regenerating code for referenced models more times than necessary, you might want to choose a specific working directory and remain in it for all sessions.

As model reference code generated for Real-Time Workshop targets as well as for simulation targets is placed in project directories, the same considerations as above apply even if you are generating target applications only. That is, code for all models referenced from a given model ends up being generated in the same project directory, even if it is generated for different targets and at different times.

Documenting a Code Generation Project

In this section...

“Tutorial Overview” on page 3-67

“Generating Code for the Model” on page 3-68

“Opening Report Generator” on page 3-69

“Setting Report Output Options” on page 3-70

“Specifying Models and Subsystems to Include in a Report” on page 3-72

“Setting Component Options” on page 3-72

“Generating the Report” on page 3-73

“Reviewing the Generated Report” on page 3-73

Tutorial Overview

As explained in “Documenting the Project” on page 2-11, one way of documenting a Real-Time Workshop® code generation project is to use the Simulink® Report Generator™ software. In this tutorial, you adjust the Simulink Report Generator settings to include custom code and then generate a report for the Real-Time Workshop demo `rtwdemo_f14`. A summary of the steps for the tutorial follows:

- 1 Generate code for the model.
- 2 Open Report Generator.
- 3 Set report output options.
- 4 Specify models and subsystems to be included.
- 5 Set component options.
- 6 Generate the report.
- 7 Review the generated report.

Note You need a Simulink Report Generator license to complete steps 3 through 5. If you omit those steps and use the default option settings, the resulting output will vary from what is documented in step 6.

For details on using Report Generator, see the *Simulink Report Generator User's Guide*.

Generating Code for the Model

Before you can use Report Generator to document your project, you must generate code for the model. To generate code for the `rtwdemo_f14` demo,

1 In the MATLAB® Current Directory browser, navigate to a directory where you have write access.

2 Create a working directory from the MATLAB command line by typing:

```
mkdir report_ex
```

3 Make `report_ex` your working directory:

```
cd report_ex
```

4 Open the `rtwdemo_f14` model by clicking the model name below or by entering the model name on the MATLAB command line.

```
rtwdemo_f14
```

The model appears in a Simulink® model window.

5 In the model window, choose **File > Save As**, navigate to the working directory, `report_ex`, and save a copy of the `rtwdemo_f14` model as `myf14.mdl`.

6 Open Model Explorer by selecting **Model Explorer** from the model's **View** menu.

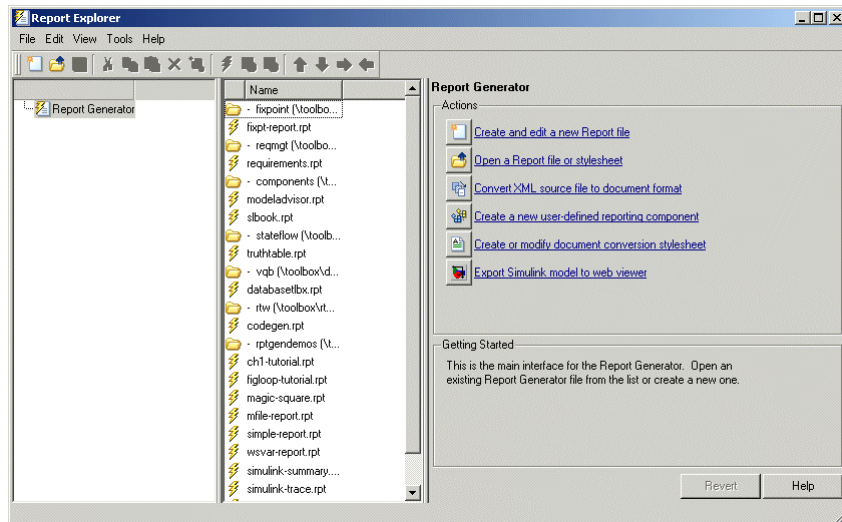
7 In the **Model Hierarchy** pane, click the + sign preceding the model name to reveal its components.

- 8 Click **Configuration (Active)** in the left pane.
- 9 In the **Contents** pane, click **Real-Time Workshop**. The **Real-Time Workshop** pane appears.
- 10 Select the **Report** tab. Clear the **Create code generation report** and **Launch report automatically** check boxes.
- 11 Select the **General** tab. Select **Generate code only** and click **Apply**.
- 12 Click **Generate code**. The Real-Time Workshop build process generates code for the model.

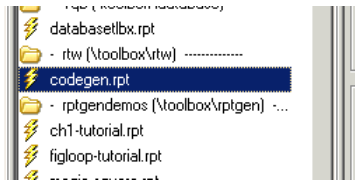
Opening Report Generator


After you generate the code, open the Report Generator.

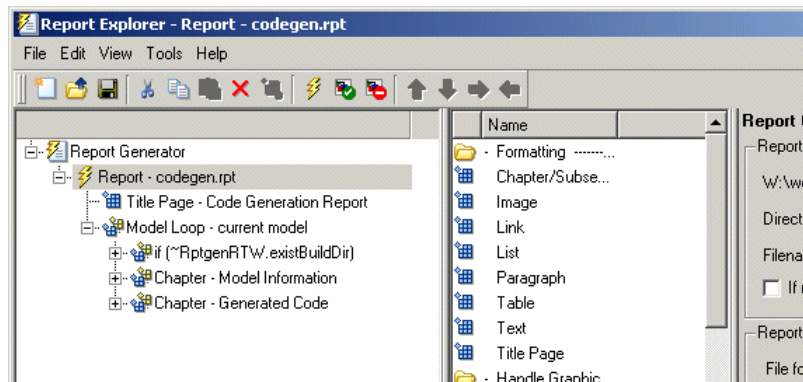
- 1 In the model window, select **Tools > Report Generator**. The Report Explorer window opens.



- 2 In the options pane (center), find the folder **rtw** (`\toolbox\rtw`) and the setup file that it contains — **codegen.rpt**.



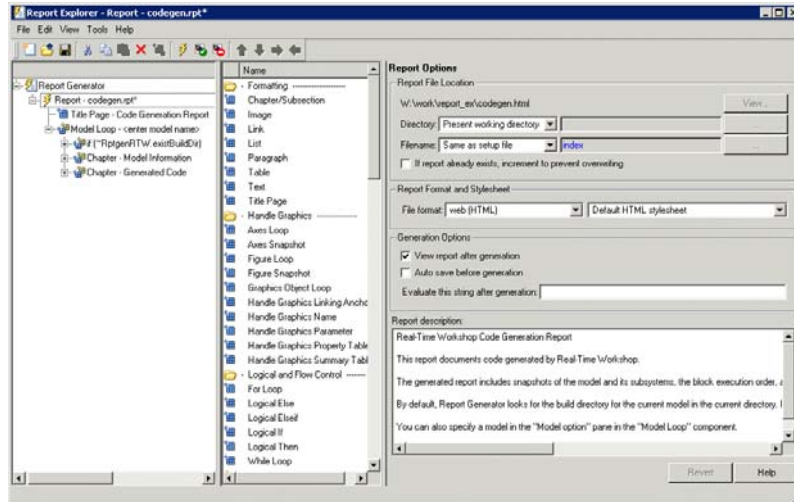
- 3 Double-click **codegen.rpt** or select it and click the **Open report** button . Report Generator displays the structure of the setup file in the outline pane (left).



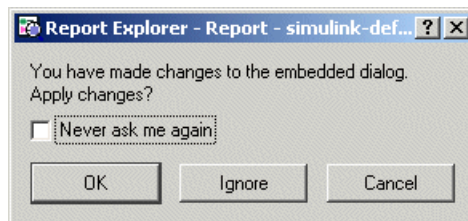
Setting Report Output Options

Before generating a report, you can specify report output options, such as the directory, file name, and format. The following steps explain how to generate a Microsoft® Word report named `MyCGModelReport.rtf`.

- 1 Review the options listed under Report Options in the properties pane.



- 2 Leave the **Directory** field set to Present working directory.
- 3 Select Custom: for **Filename** and replace index with the name MyModelCGReport.
- 4 For **File format**, specify Rich Text Format and replace Standard Print with Numbered Chapters & Sections.
- 5 In the outline pane (left), click **Report - codegen.rpt***. The following acknowledgment dialog box appears.



- 6 Click **OK**.

Specifying Models and Subsystems to Include in a Report

Specify the models and subsystems to be included in the generated report by setting options in the Model Loop component.

- 1** In the outline pane (left), select **Model Loop**. Report Generator displays Model Loop component options in the properties pane.
- 2** If not already selected, select Current block diagram for the **Model name** option.
- 3** In the outline pane, click **Report - codegen.rpt***. If you modified the value of the **Model name** option, the change acknowledgment dialog box appears. If the dialog box appears, click **OK**.

Setting Component Options

After setting the report output options, review and, if appropriate, adjust Real-Time Workshop component options.

- 1** In the outline pane (left), expand the node **Chapter - Generated Code**. By default, the report includes two sections, each containing one of two Real-Time Workshop report components.
- 2** Expand the node **Section 1 — Code Generation Summary**. The **Code Generation Summary** component appears.
- 3** Select **Code Generation Summary**. Options for the component appear in the properties pane.
- 4** Click **Help** to review the report customizations you can make with the Code Generation Summary component. For this tutorial, do not customize the component.
- 5** Return focus to the Report Explorer window and expand the node **Section 1 — Generated Code Listing**. The **Import Generated Code** component appears.
- 6** Select **Import Generated Code**. Options for the component appear in the properties pane.

- 7 Click **Help** to review the report customizations you can make with the Import Generated Code component.
- 8 Return focus to the Report Explorer window.

Generating the Report

After you adjust report options, from the **Report Explorer** window, generate the report by clicking **File > Report**. A **Message List** dialog box appears, which displays messages you can monitor as the report is generated. Model snapshots also appear during report generation.

For alternative ways of generating reports, see “Generating Reports” in the Simulink Report Generator documentation.

Reviewing the Generated Report

Review your generated report. Make sure the following information is included:

- System snapshots (model and subsystem diagrams)
- Block execution order list
- Real-Time Workshop and model version information for generated code
- List of generated files
- Optimization configuration parameter settings
- Real-Time Workshop target selection and build process configuration parameter settings
- Subsystem map
- File name, path, and generated code listings for the following:
 - `myf14.c`
 - `rt_nonfinite.c`
 - `myf14.h`
 - `myf14_private.h`
 - `myf14_types.h`

- `rt_nonfinite.h`
- `rtmodel.h`
- `rtwtypes.h`

application modules

With respect to Real-Time Workshop® program architecture, these are collections of programs that implement functions carried out by the system-dependent, system-independent, and application components.

atomic subsystem

Subsystem whose blocks are executed as a unit before moving on. Conditionally executed subsystems are atomic, and atomic subsystems are nonvirtual. Unconditionally executed subsystems are virtual by default, but can be designated as atomic. The Real-Time Workshop® build process can generate reusable code only for nonvirtual subsystems.

base sample rate

Fundamental sample time of a model; in practice, limited by the fastest rate at which a processor's timer can generate interrupts. All sample times must be integer multiples of the base rate.

block I/O structure (model_B)

Global data structure for storing block output signals. The number of block output signals is the sum of the widths of the data output ports of all nonvirtual blocks in your model. By default, Simulink® and the Real-Time Workshop® build process try to reduce the size of the *model_B* structure by reusing the entries in the *model_B* structure and making other entries local variables.

block target file

File that describes how a specific Simulink® block is to be transformed to a language such as C, based on the block's description in the Real-Time Workshop® file (*model.rtw*). Typically, there is one block target file for each Simulink® block.

code reuse

Optimization whereby code generated for identical nonvirtual subsystems is collapsed into one function that is called for each subsystem instance with appropriate parameters. Code reuse, along with *expression folding*, can dramatically reduce the amount of generated code.

configuration

Set of attributes for a model which defines parameters governing how a model simulates and generates code. A model can have one or more such configuration sets, and users can switch between them to change code generation targets or to modify the behavior of models in other ways.

configuration component

Named element of a configuration set. Configuration components encapsulate settings associated with the **Solver**, **Data Import/Export**, **Optimization**, **Diagnostics**, **Hardware Implementation**, **Model Referencing**, and **Real-Time Workshop** panes in the Configuration Parameters dialog box. A component may contain subcomponents.

embedded real-time (ERT) target

Target configuration that generates model code for execution on an independent embedded real-time system. Requires a Real-Time Workshop® Embedded Coder™ license.

expression folding

Code optimization technique that minimizes the computation of intermediate results at block outputs and the storage of such results in temporary buffers or variables. It can dramatically improve the efficiency of generated code, achieving results that compare favorably with hand-optimized code.

file extensions

The table below lists the Simulink®, Target Language Compiler, and Real-Time Workshop® file extensions.

Extension	Created by	Description
.c or .cpp	Target Language Compiler	The generated C or C++ code
.h	Target Language Compiler	C/C++ include header file used by the .c or .cpp program

Extension	Created by	Description
.mdl	Simulink®	Contains structures associated with Simulink® block diagrams
.mk	Real-Time Workshop®	Makefile specific to your model that is derived from the template makefile
.rtw	Real-Time Workshop®	Intermediate compilation (<i>model.rtw</i>) of a .mdl file used in generating C or C++ code
.tlc	The MathWorks and Real-Time Workshop® users	Target Language Compiler script files that the Real-Time Workshop® build process uses to generate code for targets and blocks
.tmf	Supplied with Real-Time Workshop®	Template makefiles
.tmw	Real-Time Workshop®	Project marker file inside a build directory that identifies the date and product version of generated code

generic real-time (GRT) target

Target configuration that generates model code for a real-time system, with the resulting code executed on your workstation. (Execution is

not tied to a real-time clock.) You can use GRT as a starting point for targeting custom hardware.

host system

Computer system on which you create and may compile your real-time application. Also referred to as emulation hardware.

inline

Generally, this means to place something directly in the generated source code. You can inline parameters and S-functions using the Real-Time Workshop[®] software and the Target Language Compiler.

inlined parameters

(Target Language Compiler Boolean global variable: `InlineParameters`)
The numerical values of the block parameters are hard-coded into the generated code. Advantages include faster execution and less memory use, but you lose the ability to change the block parameter values at run time.

inlined S-function

An S-function can be inlined into the generated code by implementing it as a `.t1c` file. The code for this S-function is placed in the generated model code itself. In contrast, noninlined S-functions require a function call to an S-function residing in an external MEX-file.

interrupt service routine (ISR)

Piece of code that your processor executes when an external event, such as a timer, occurs.

loop rolling

(Target Language Compiler global variable: `RollThreshold`) Depending on the block's operation and the width of the input/output ports, the generated code uses a `for` statement (rolled code) instead of repeating identical lines of code (flat code) over the signal width.

make

Utility to maintain, update, and regenerate related programs and files. The commands to be executed are placed in a *makefile*.

makefiles

Files that contain a collection of commands that allow groups of programs, object files, libraries, and so on, to interact. Makefiles are executed by your development system's make utility.

model.rtw

Intermediate record file into which the Real-Time Workshop® build process compiles the blocks, signals, states, and parameters a model, which the Target Language Compiler reads to generate code to represent the model.

multitasking

Process by which a microprocessor schedules the handling of multiple tasks. In generated code, the number of tasks is equal to the number of sample times in your model. *See also* pseudo multitasking.

noninlined S-function

In the context of the Real-Time Workshop® build process, this is any C MEX S-function that is not implemented using a customized .t1c file. If you create a C MEX S-function as part of a Simulink® model, it is by default noninlined unless you write your own .t1c file that inlines it.

nonreal-time

Simulation environment of a block diagram provided for high-speed simulation of your model. Execution is not tied to a real-time clock.

nonvirtual block

Any block that performs some algorithm, such as a Gain block. The Real-Time Workshop® build process generates code for all nonvirtual blocks, either inline or as separate functions and files, as directed by users.

pseudo multitasking

On processors that do not offer *multitasking* support, you can perform pseudomultitasking by scheduling events on a fixed time sharing basis.

real-time model data structure

The Real-Time Workshop® build process encapsulates information about the root model in the real-time model data structure, often abbreviated

as rtM. rtM contains global information related to timing, solvers, and logging, and model data such as inputs, outputs, states, and parameters.

real-time system

Computer that processes real-world events as they happen, under the constraint of a real-time clock, and that can implement algorithms in dedicated hardware. Examples include mobile telephones, test and measurement devices, and avionic and automotive control systems.

Real-Time Workshop® target

Set of code files generated by the Real-Time Workshop® build process for a standard or custom target, specified by a Real-Time Workshop® configuration component. These source files can be built into an executable program that will run independently of Simulink®. *See also* simulation target, configuration.

run-time interface

Wrapper around the generated code that can be built into a stand-alone executable. The run-time interface consists of routines to move the time forward, save logged variables at the appropriate time steps, and so on. The run-time interface is responsible for managing the execution of the real-time program created from your Simulink® block diagram.

S-function

Customized Simulink® block written in C, Fortran, or M-code. The Real-Time Workshop® build process can target C code S-functions as is or users can *inline* C code S-functions by preparing TLC scripts for them.

simstruct

Simulink® data structure and associated application program interface (API) that enables S-functions to communicate with other entities in models. Simstructs are included in code generated by the Real-Time Workshop® build process for noninlined S-functions.

simulation target

Set of code files generated for a model which is referenced by a Model block. Simulation target code is generated into `/slprj/sim` project directory in the working directory. Also an executable library compiled from these codes that implements a Model block. *See also* Real-Time Workshop® target.

single-tasking

Mode in which a model runs in one task, regardless of the number of sample rates it contains.

stiffness

Property of a problem that forces a numerical method, in one or more intervals of integration, to use a step length that is excessively small in relation to the smoothness of the exact solution in that interval.

system target file

Entry point to the Target Language Compiler program, used to transform the Real-Time Workshop® file into target-specific code.

target file

File that is compiled and executed by the Target Language Compiler. The block and system target TLC files used specify how to transform the Real-Time Workshop® file (*model.rtw*) into target-specific code.

Target Language Compiler (TLC)

Program that compiles and executes system and target files by translating a *model.rtw* file into a target language by means of TLC scripts and template makefiles.

Target Language Compiler program

One or more TLC script files that describe how to convert a *model.rtw* file into generated code. There is one TLC file for the target, plus one for each built-in block. Users can provide their own TLC files to inline S-functions or to wrap existing user code.

target system

Specific or generic computer system on which your real-time application is intended to execute. Also referred to as embedded hardware.

targeting

Process of creating software modules appropriate for execution on your target system.

task identifier (tid)

In generated code, each sample rate in a multirate model is assigned a task identifier (tid). The tid is used by the model output and update

routines to control the portion of your model that should execute at a given time step. Single-rate systems ignore the `tid`. *See also* base sample rate.

template makefile

Line-for-line makefile used by a make utility. The Real-Time Workshop® build process converts the template makefile to a makefile by copying the contents of the template makefile (usually `system.tmf`) to a makefile (usually `system.mk`) replacing tokens describing your model's configuration.

virtual block

Connection or graphical block, for example a Mux block, that has no algorithmic functionality. Virtual blocks incur no real-time overhead as no code is generated for them.

work vector

Data structures for saving internal states or similar information, accessible to blocks that may require such work areas. These include state work (`rtDWork`), real work (`rtRWork`), integer work (`rtIWork`), and pointer work (`rtPWork`) structures. For example, the Memory block uses a real work element for each signal.

A

- acceleration of development process 1-7
- application requirements 2-4

B

- block target file 2-18
- build directory
 - contents of 2-26
 - naming convention 2-25
 - rtwdemo_f14 example 3-14
 - seeing files 3-14
- build directory optional contents
 - C API files 2-26
 - HTML report files 2-26
 - model.rtw* 2-26
 - object files 2-26
 - subsystem code modules 2-26
 - TLC profiler files 2-26
- build process
 - files and directories created 2-20
 - messages in MATLAB Command Window 3-13
 - steps in 2-15

C

- code generation for Simulink models 1-4
- Code Generation Summary component 3-72
- code generation tutorial 3-30
 - product support for 1-16
- code verification tutorial 3-24
- code with buffer optimization 3-36
 - efficiency 3-36
- code with expression folding 3-36
- code without buffer optimization 3-33
- comments options 3-12
- compilers
 - LCC 1-13
 - list of supported 1-12

- MEX 1-12

- Microsoft Visual C/C++ 1-13
- optimization settings 1-12
- Watcom 1-13

- configuration parameters 2-5
- questions to consider 2-4

D

- data logging 3-16
 - from generated code 3-26
 - tutorial 3-16
 - via Scope blocks
 - example 3-24
- debug options 3-11
- dialog boxes
 - Block Parameters 3-43
 - Configuration Parameters 2-4
 - External Mode Control Panel 3-49
 - External Signal and Triggering 3-50
 - Model Explorer 2-5
- directories
 - build 3-4
 - working 3-4
- documentation 3-67
 - online 1-19

E

- executable
 - running 3-14
- extensible make process 1-6
- extensive model debugging support 1-5
- external mode
 - building executable 3-44
 - control panel 3-49
 - definition of 1-4
 - model setup 3-42
 - parameter tuning 3-53
 - running executable 3-47

tutorial 3-41

F

files

generated. *See* generated files
fixed-step solver 3-5

G

generated files 2-20

- model* (UNIX executable) 2-23
- model.c* 2-21
- model_capi.c* 2-24
- model_capi.h* 2-24
- model_data.c* 2-22
- model_dt.h* 2-24
- model.exe* (PC executable) 2-23
- model.h* 2-21
- model.mdl* 2-20
- model.mk* 2-23
- model_private.h* 2-22
- model.rtw* 2-21
- model_targ_data_map.m* 2-24
- model_target_rtw* 2-25
- model_types.h* 2-22
- modelsources.txt* 2-24
- rt_nonfinite.c* 2-23
- rt_nonfinite.h* 2-23
- rt_sfcn_helper.c*, 2-25
- rt_sfcn_helper.h* 2-25
- rtmodel.h* 2-23
- rtw_proj.tmw* 2-23
- rtwtypes.h* 2-23
- subsystem.c* 2-24
- subsystem.h* 2-24

generic real-time (GRT) target
tutorial 3-4

I

Import Generated Code component 3-72

integration

- Real-Time Workshop with Simulink 1-5
- Real-Time Workshop with Stateflow 1-6

L

large-scale modeling 1-4

M

make process 1-3

make utility 2-13

makefile 2-18

MAT-files

- creating 3-19

- loading 3-27

MATLAB 1-2

MATLAB Report Generator

- opening 3-69

- setting component options for 3-72

- setting report output options for 3-70

- specifying models and subsystems with 3-72

model (on UNIX) 2-23

Model Advisor 2-6

model compiling process 2-17

Model Explorer

- viewing code in 3-64

model referencing

- converting to 3-58

- definition of 3-55

- generating code 3-62

- tutorial 3-55

model.bat 2-24

model.c 2-21

model_capi.c 2-24

model_capi.h 2-24

model_data.c 2-22

model_dt.h 2-24

model.h 2-21
model.mdl 2-20
model.mk 2-23
model_private.h 2-22
model.rtw 2-21
model_targ_data_map.m 2-24
model_target_rtw 2-25
model_types.h 2-22
modelsources.txt 2-24

O

optimizations

- expression folding 3-36
- signal storage reuse 3-34

 out-of-environment error message 1-12

P

parameters

- setting correctly 3-5

 pilot G Force plot 3-18

- project
 - documenting 3-67
- project directory 2-25
 - working with 3-65

R

rapid simulations 1-4

- Real-Time Workshop
 - capabilities and benefits 1-4
 - components and features 1-3
 - demos 1-15
 - extensible make process 1-6
 - features 1-7
 - installing 1-11
 - integration with Simulink 1-5
 - integration with Stateflow 1-6
 - model debugging support 1-5
 - products supported by 1-16

report 3-38

- software development with 1-7
- third-party compilers
 - configuration 1-13
 - support 1-12
- typical workflow 2-2

 Real-Time Workshop Report 3-38

- Report Generator
 - opening 3-69
 - setting component options for 3-72
 - setting report output options for 3-70
 - specifying models and subsystems with 3-72
- report output options 3-70
- reports
 - generating code generation 3-67
- rt_nonfinite.c* 2-23
- rt_nonfinite.h* 2-23
- rt_sfcn_helper.c* 2-25
- rt_sfcn_helper.h* 2-25
- rtmodel.h* 2-23
- rtw_proj.tmw* 2-23
- rtwdemo_f14* GRT code generation tutorial 3-4
- rtwdemo_f14* model 3-3
- rtwtypes.h* 2-23
- run-time interface modules 3-33

S

save to workspace options 3-17

- Simulink 1-2
- Simulink Report Generator
 - opening 3-69
 - setting component options for 3-72
 - setting report output options for 3-70
 - specifying models and subsystems with 3-72
- slprj* directory 2-25
- Stateflow 1-6
- subsystem.c* 2-24
- subsystem.h* 2-24
- subsystems

- converting to referenced models 3-58
- treating as atomic units 3-57
- symbols options 3-11
- system target file 2-17

T

- target
 - how to specify 3-8
 - Real-Time Workshop support 1-6
- target file
 - block 2-18
 - system 2-17
- Target Language Compiler
 - function library 2-17
 - generation of code by 2-17
 - TLC scripts 2-17

- tuning parameters 3-53
- tutorials
 - building generic real-time program 3-4
 - code generation 3-30
 - code verification 3-24
 - data logging 3-16
 - external mode 3-41
 - model referencing 3-55

V

- variable-step solver 3-5

W

- working directory 2-25